

Everyware Server

- **Enabling the Internet of Things**
- **Easy: all-in-one M2M integration platform**
- **Yours: 100% in your data center**
- **Quick: up and running in minutes**
- **Compact: 1U high, 19" rack mount system**
- **Reliable: industrial grade hardware**
- **Powerful: thousands of devices**



FEATURES

All In One M2M – All the features of Everyware Cloud are enclosed into a compact rack mountable appliance that can be easily installed in your data center or as a local aggregator.

Your own M2M Device Cloud – Complete privacy and on-premises control.

M2M Optimized – Integration platform designed from ground up to connect devices to enterprise applications.

Powerful – Up to 3.000 messages per second in typical telemetry applications, allowing thousands of devices, depending on message size and frequency.

Rich APIs – REST APIs, including PUSH, and integrated visualization.

Reliable – The Everyware Server is designed to meet industry standards for continued operations while the Cloud platform automatically keeps your devices connected and feeding real-time data for analysis.

Quick setup – Everyware Server is up and running in minutes and can be easily configured through intuitive web pages.

The Everyware Server is the Eurotech M2M Integration platform designed to offer an added level of privacy and security above and beyond public cloud by encompassing all the features of Everyware Cloud in a reliable and physically accessible hardware device that brings convenience and complete control to your data center.

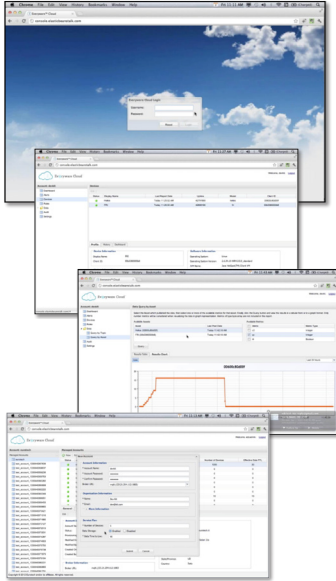
Everyware Server simplifies device and data management by providing an innovative appliance that connects distributed devices to business enterprise applications leveraging secure, open and reliable protocols.

Everyware Cloud provides:

- Secure device connectivity based on MQTT
- Data management (collection, storage, analysis and access)
- Device management (application update, configuration)

All these features allow customers to create innovative apps while reducing maintenance costs and time to market.

Everyware Cloud can connect any device, even small footprint computational devices, and acts as an entry point for your devices into the enterprise so device data can be provided to applications or systems to run the business efficiently and effectively.



Platform: Scalable, cloud-based M2M platform for connecting devices and applications

- SingleTenant Architecture
- Data agnostic platform
- Up to 3.000 messages/second in typical telemetry applications
- Many-to-many relation between devices and applications
- Built-in device status map
- Add new devices easily ("Zero config")
- Remote device SW and Application Lyfe Cycle management functions
- Store data of any type and size; unlimited data retention time
- REST APIs for application development (including console features)
- Rules Engine for real-time data analysis and event processing
- 2-way communication channels with devices

Platform Console: Web-based interface for platform management

- Real-time device & data management
- Account and User management
- Instant data aggregation & visualization
- Rules creation management

Device Connectivity: Easily and reliably connect any kind of device

- Scalable and optimized bidirectional device protocol
- Based on MQTT v 3.1 (Open Standard)
- M2M-optimized data model
- Secure with SSL and Authentication
- Everyware Cloud clients available for third party devices
- Java and C++ clients (open source)

Application Development: Base your application on a standard, flexible interface

- Easy to use REST APIs for application development
- XML and JSON format

Device Management: Remotely configure and update your devices

- Laid over a single MQTT connection and based on OSGi
- Secure with SSL and authentication
- Remote device configuration and control
- Full application lifecycle management
- Remote configuration

Physical

- Redundant internal storage, external storage supported
- Gigabit Ethernet network interface
- 1U high, 19" rack mount chassis (352mm deep)
- Power: 90/265V AC (global PS), <100W
- Operating temperature: +5° to +55°C (+41° to +141°F)

Note: The information in this document is subject to change without notice and should not be construed as a commitment by EUROTECH. While reasonable precautions have been taken, EUROTECH assumes no responsibility for any error that may appear in this document. All trademarks or registered trademarks are the properties of their respective companies.