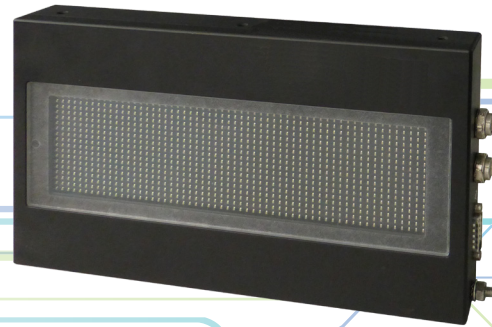


DynaDOT 10-13

- Fanless, Low Power
- Thin (35 mm) and Lightweight
- High Brightness (>2.000 cd/m²)
- Auto and Manual Brightness
- Smart Graphics, Bit-maps, Animations
- Daisy Chainable, with Ethernet bypass
- IP54
- EN50155 Certified



FEATURES

EN50155 Certified – Designed for Railway applications

Thin and lightweight – At just 35 mm deep, it's one of the thinnest dot matrix panels and can be installed in space constrained applications

Fanless, with high brightness – Great brightness to power consumption ratio in a fanless enclosure

Brightness management – Automatic and manual brightness management modes

Versatile graphics – Supports: bit-mapped images, real time animations, smart areas, auto scroll, multilanguage fonts

Daisy chainable – Internal Ethernet switch allows daisy chaining multiple units

Ethernet bypass mode – Allows uninterrupted service when a daisy chained unit is powered off

- On-board PIS (trains, buses, metros)
- Track-side PIS
- Display for space constrained installations

DynaDOT 10-13 is an EN50155 certified, fanless dot matrix display certified for Railway applications that delivers high brightness, high efficiency LEDs in a very thin enclosure.

Easy to install both on vehicles and track side, the DynaDOT 10-13 is ideal for applications where traditional displays are hard to deploy due to their depth, such as when the display should be embossed on the train door.

Brightness of the panel can be managed automatically or manually: internal temperature and light sensors allow fine, continuous control.

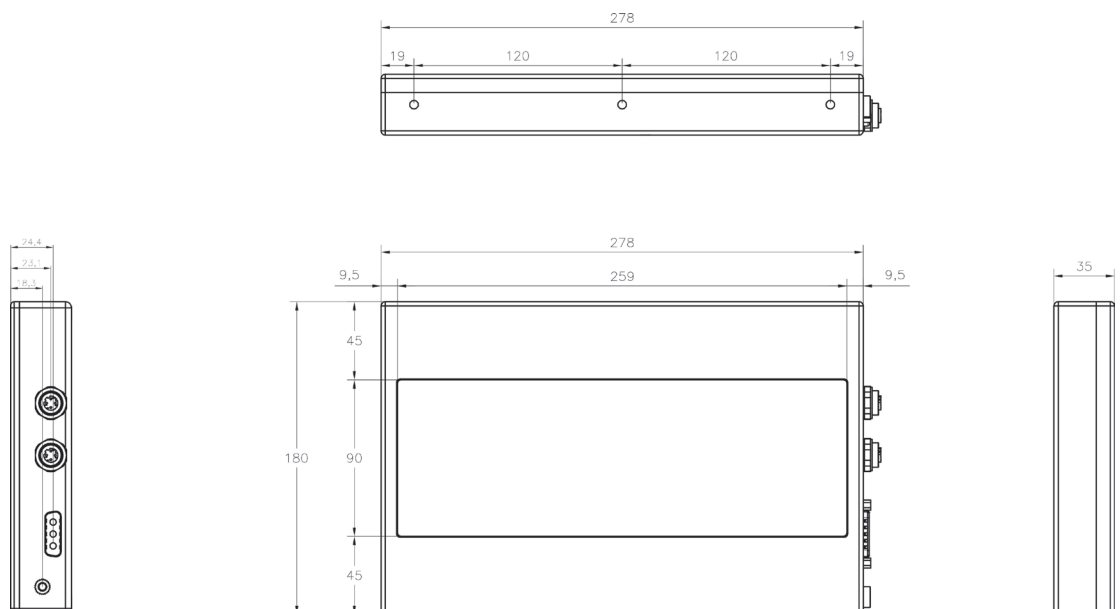
The DynaDOT 10-13 offers sophisticated graphics modes: it allows partitioning of the surface in smart areas that can be controlled independently; it supports bit mapped images, real-time animations and auto scrolling.

The DynaDOT 10-13 comes with two Fast Ethernet interfaces that support daisy chaining multiple units and Ethernet bypass mode.

With Ethernet bypass, it is possible to instantly recover connectivity along the chain in case the unit is powered down: in case of an event, internal relays are triggered and cross connect the two M12 Ethernet interfaces, restoring the electrical path of the chain.

Specifications

DYNAMIC AREA RESOLUTION	58 x 18 dots
DOT PITCH	4 mm
ACTIVE AREA	232 x 72 mm
BRIGHTNESS	>2.000 cd/m ²
VIEWING ANGLE	±30°
LED COLOR	Yellow (590 nm) - Other colors available upon request
INTERFACES	Fast Ethernet Internal switch for daisy chaining Ethernet bypass mode
POWER SUPPLY	110 VDC nominal (77 to 137.5 VDC)
POWER CONSUMPTION	15W typical
TEMPERATURE	Operating: EN50155 Class T3 (-25° to +70°C; +85°C for 10 min.) Storage: -30° to +85°C
HUMIDITY	<95% at 45°C non-condensing
DIMENSIONS	280x180x35 mm (W x H x D)
WEIGHT	3Kg
CHASSIS	Aluminum - black anodized
IP RATING	IP54
COMPLIANCE	CE EN 50155 (Railway applications) EN 61373 (Vibrations & Shocks) EN 50121 (Surges, Electrostatic discharge, Burst, radio frequency Interference susceptibility and radio frequency disturbances Emission test) EN 60068 (Temperature test) UNI CEI 11170 (Fire & Smoke)



Note: The information in this document is subject to change without notice and should not be construed as a commitment by EUROTECH. While reasonable precautions have been taken, EUROTECH assumes no responsibility for any error that may appear in this document. All trademarks or registered trademarks are the properties of their respective companies.