

ADP-1040-00

MVB Adapter Kit for COM-1240

Overview

The ADP-1040-00 is an adapter kit designed to allow users to interface the COM-1240 to an MVB (Multifunction Vehicle Bus) communication bus.

All components used are fully RoHS compliant.



Note:

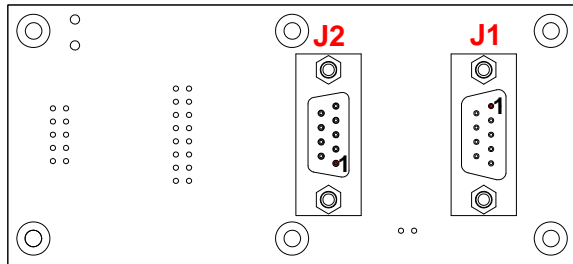
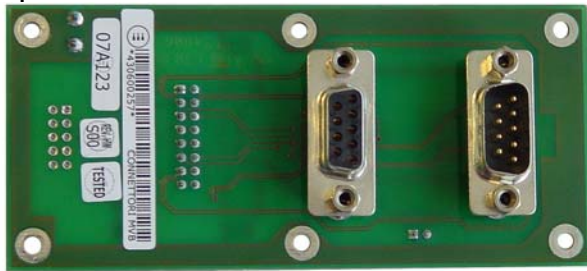
Users should refer to the relevant COM-1240 User documentation before attempting to use the equipment; this documentation is available for download from <http://www.eurotech.com/en/download/>. Technical Datasheets can be downloaded from <http://www.eurotech.com/en/Technical Datasheets.aspx>

Kit Contents

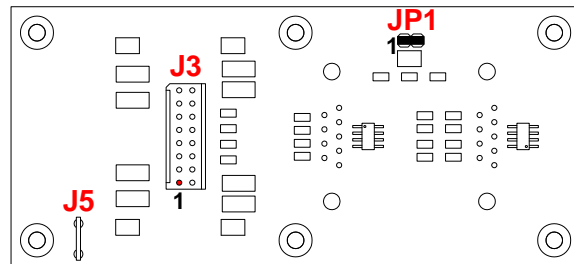
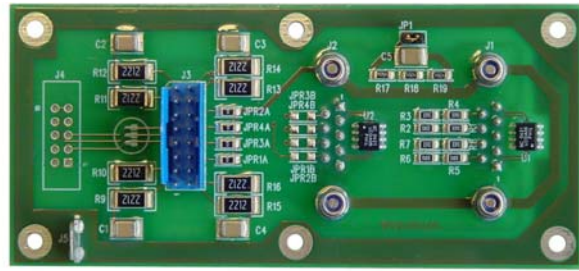
- 1x MVB Adapter Board (9C430600S6L)
- 1x Interconnection Cable (7030000256L)

MVB Adapter Board Description

Top Side



Bottom Side



Connector #	Function	Format	Qty of pins	Pitch (mm)
J1	MVB Bus Connector 1	Male DB9 Connector	9	-
J2	MVB Bus Connector 2	Female DB9 Connector	9	-
J3	Connector for 7030000256L Cable	Male HE14	16 (8x2)	2.54
J5	Ground Connector	Vertical Male Faston 6.3 mm	-	5.00

Jumper #	Function	Format	Qty of pins	Pitch (mm)
JP1	Connect/Disconnect J5 to the shield	Pinstrip	2 (2x1)	2.00

J1 Pinout

Pin #	Signal	Pin #	Signal
1	A1 Data P	6	A Term P
2	A1 Data N	7	A Term N
3	Not Connected	8	B Term P
4	B1 Data P	9	B Term N
5	B1 Data N	-	-

J2 Pinout

Pin #	Signal	Pin #	Signal
1	A2 Data P	6	A Term P
2	A2 Data N	7	A Term N
3	Not Connected	8	B Term P
4	B2 Data P	9	B Term N
5	B2 Data N	-	-

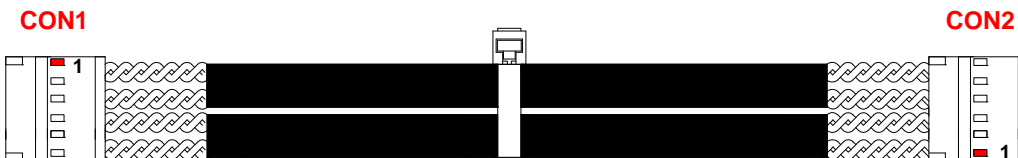
J3 Pinout

Pin #	Signal	Pin #	Signal
1	A1 Data P	2	A2 Data P
3	A1 Data N	4	A2 Data N
5	A BUS +5V	6	A BUS GND
7	RX	8	RS232 GND
9	TX	10	RS232 GND
11	B BUS +5V	12	B BUS GND
13	B1 Data P	14	B2 Data P
15	B1 Data N	16	B2 Data N

JP1 Status

Status	Meaning	Default
Open	J5 disconnected to the shield	✓
Closed	J5 connected to the shield	

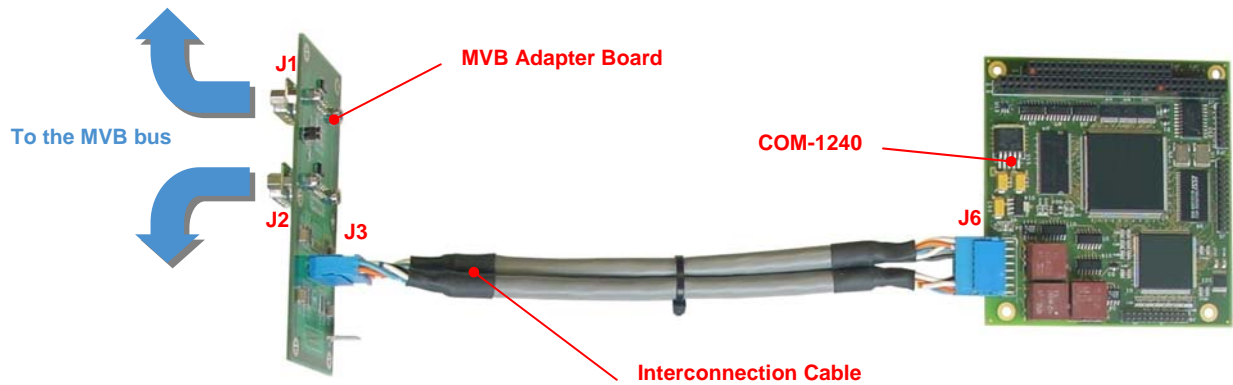
703000256L Interconnection Cable Description



From CON1 Pin #	To CON2 Pin #	Pin #
1	1	B1 Data N
2	2	B2 Data N
3	3	B1 Data P
4	4	B2 Data P
5	Not Connected	-
6	6	-B BUS GND
7	Not Connected	-
8	Not Connected	-
9	Not Connected	-
10	Not Connected	-
11	Not Connected	-
12	12	A BUS GND
13	13	A1 Data N
14	14	A2 Data N
15	15	A1 Data P
16	16	A2 Data P

Connect the ADP-1040-00 adapter kit to the COM-1240

1. Make sure that the COM-1240 is turned off.
2. Connect one end of the Interconnection Cable to J3 of the MVB Adapter Board
3. Connect the other end of the Interconnection Cable to J6 of the COM-1240
4. Now the COM-1240 is ready to be interfaced to a MVB bus
5. Connect J1 and J2 of the MVB Adapter Board to the MVB bus (or to a termination cap as required)
6. Apply power to the COM-1240

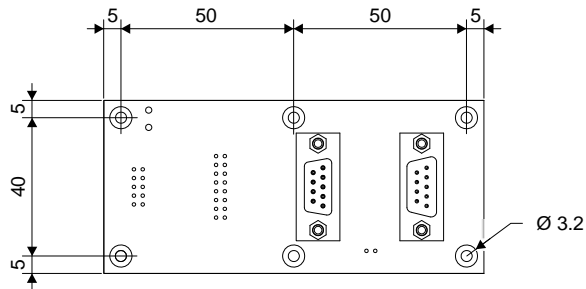


Note:

Users should take care to terminate both ends of the MVB bus by connecting an appropriate termination cap according to the MVB specifications.

Mechanical dimensions

MVB Adapter Board (dimensions in millimetres)



Interconnection Cable (dimensions in millimetres)

