

# CBL-1452-00

## CABLE-SET FOR THE CPU-1452, CPU-1462, CPU-1472 & CPU-1482

### CBL-1452-00 Cable Set

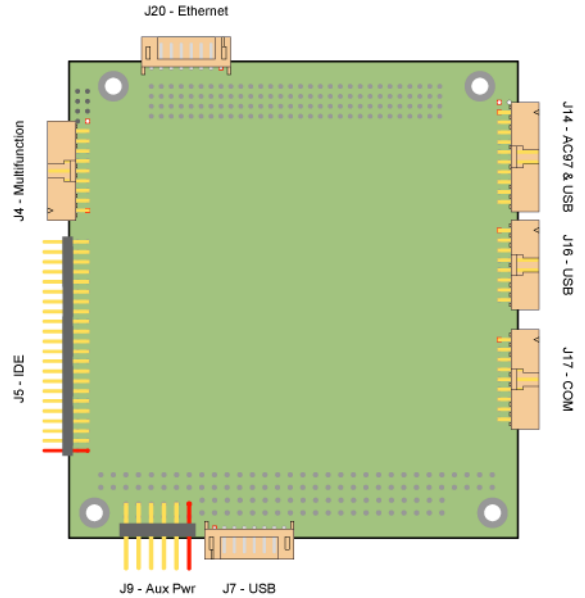
#### Cable Set Overview

- The CBL-1452 Cable set is intended to enable customers to start rapidly developing solutions using the CPU-1452, CPU-1462, CPU-1472 and CPU-1482 range of modules.
- All the Cables and adaptors are fully RoHS compliant.
- Users should refer to the Module documentation, available from the Eurotech Website in the Download Area, before attempting to use the Module or Cable set.
- Customers should note that all images contained within this document are only intended as a guide, actual cables may vary, but will always meet or exceed the specifications as shown.

#### Cable Set Contents

- 1x 7020000011L: Auxiliary power input
- 1x 7000000045L: 2x IDE
- 1x 7000000124L: Multifunction, Mouse and VGA
- 1x 7000000074L: 2x Serial Ports
- 1x ACS-9079-00: Multifunction Adaptor

#### CPU-1452, CPU-1462, CPU-1472 & CPU-1482 Connector Locations



#### Related Parts

- ACS-9031-00:** Digital LCD/TFT LVDS receiver
- ACS-9092-00:** 2 Dual-Port USB type "A" adaptors for J7 & J14
- ACS-9092-02:** 2 Dual-Port USB type "A" adaptors for J16
- ACS-9093-01:** AC97 Audio CODEC for J14
- ACS-9095-05:** RJ45 Ethernet 10/100 adapter for J20

#### 7020000011L: Auxiliary Power Input



#### Connector Pinout

Pin #	Colour	Use	Pin #	Colour	Use
1	Black	Ground	2	Red	+5 Volts
3	--	No Cable	4	Yellow	+12 Volts
5	White	-5 Volts	6	Blue	-12 Volts
7	Black	Ground	8	Red	+5 Volts
9	Brown	Not Connected	10	Pink	Power Button
11	Purple	+5 VSB	12	Green	Power Supply On

#### Connector Details

Name	Usage	Type
Cn1	To CPU module <ul style="list-style-type: none"> <li>▪ J9</li> </ul>	Female 12-Pin (6x2), 2.54mm pitch IDC Connector

ACS-9079-00: Multifunction Adaptor

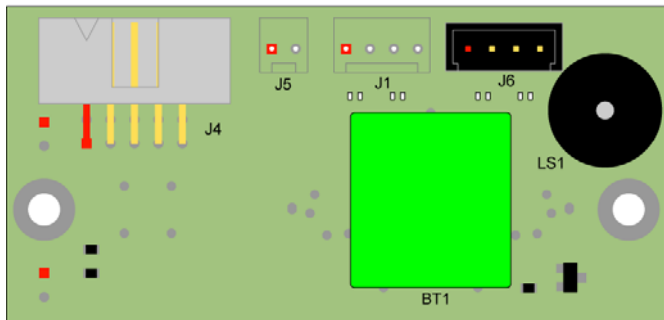
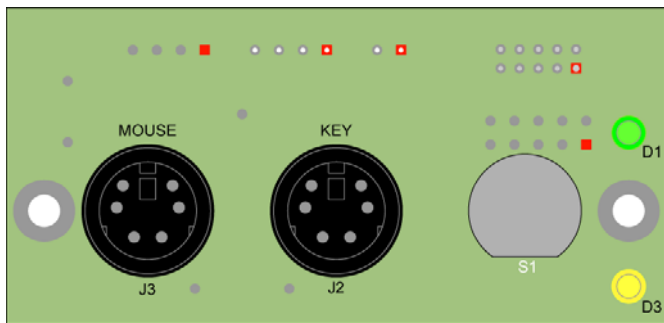


Connector Usage

- J1: Not mounted as standard
- J2: Keyboard
  - Standard PS2 style keyboard connector
- J3: Mouse
  - Standard PS2 style Mouse connector
- J4: Main Interface to CPU module
  - Male Shrouded IDC Header
  - 10pin (5x2)
  - 2.54mm pitch
  - Use 7000000124L to connect to CPU

Pin #	Use	Pin #	Use
1	Speaker	2	+5V
3	Reset	4	Not Connected
5	Keyboard Data	6	Keyboard Clock
7	Ground	8	+5V
9	VBAT	10	VPP

Connector Layout



- J5: Not mounted as standard
- J6: Mouse interface
  - Male Shrouded IDC Header
  - 4pin (4x1)
  - 2.54mm pitch
  - Use 7000000124L to connect to CPU

Pin #	Use	Pin #	Use
1	Vcc	2	Mouse Clock
3	Ground	4	Mouse Data

Other Components

- BT1: Backup Battery
  - Ni-MH
  - 3.6V
  - 60mAh
- LS1: Miniature Speaker
- S1: Reset Push-button
- D1: Green LED
  - Power present
- D3: Yellow LED
  - Activity

## 7000000045L: IDE



### Connector Pinout

Cn1 Pin #	Cn2/Cn3 Pin #	Usage	Cn1 Pin #	Cn2/Cn3 Pin #	Usage
1	1	RESET	2	2	GND
3	3	DD 7	4	4	DD 8
5	5	DD 6	6	6	DD 9
7	7	DD 5	8	8	DD 10
9	9	DD 4	10	10	DD 11
11	11	DD 3	12	12	DD 12
13	13	DD 2	14	14	DD 13
15	15	DD 1	16	16	DD 14
17	17	DD 0	18	18	DD 15
19	19	GND	20	20	KEY PIN
21	21	DMARQ	22	22	GND
23	23	DIOW#	24	24	GND
25	25	DIOR	26	26	GND
27	27	IORDY	28	28	
29	29	DMACK	30	30	GND
31	31	INTRQ	32	32	IOCS16
33	33	DA1	34	34	PDIAG
35	35	DA0	36	36	DA2
37	37	CS1FX	38	38	CS3FX
39	39	DASP	40	40	GND
41	--	Not Connected	42	--	Not Connected
43	--	Not Connected	43	--	Not Connected

### Connector Details

Name	Usage	Type
Cn1	To CPU module ▪ J5	Female 44-Pin (22x2), 2.00mm pitch IDC Connector
Cn2	To IDE Device #1	Female 40-Pin (20x2), 2.54mm pitch IDC Connector
Cn3	To IDE Device #2	Female 40-Pin (20x2), 2.54mm pitch IDC Connector

700000074L: 2x COM Ports



Connector Pinout

Cn1 Pin #	To	Pin #	Usage
1	Cn2	1	DCD
3	Cn2	2	RX
5	Cn2	3	TX
7	Cn2	4	DTR
9	Cn2	5	GND
11	Cn3	6	DSR
13	Cn3	7	RTS
15	Cn3	8	CTS
17	Cn3	9	RI

Cn1 Pin #	To	Pin #	Usage
2	Cn2	6	DSR
4	Cn2	7	RTS
6	Cn2	8	CTS
8	Cn2	9	RI
10	Cn3	1	DCD
12	Cn3	2	RX
14	Cn3	3	TX
16	Cn3	4	DTR
18	Cn3	5	GND

Connector Details

Name	Usage	Type
Cn1	To CPU module ▪ J17	FCI Part Number 90311-018LF Female 18-Pin (9x2), 2.00mm pitch Minitex IDC Connector
Cn2	COM 1	Coxoc Part Number: 201AE9MGPBAA3 Male 9-pin D-Sub
Cn3	COM 2	Coxoc Part Number: 201AE9MGPBAA3 Male 9-pin D-Sub

7000000124L: Multifunction, Mouse and VGA



Connector Pinout

Cn1 Pin #	To	Pin #	Usage
1	Cn2	7	Ground
3	Cn2	5	KBD Data
5	Cn3	4	MSE Data
7	Cn2	9	Battery In
9	Cn2	3	Reset
11	Cn4	13	H Sync
13	Cn4	1	Red
15	Cn4	15	DDC1 SCL
17	Cn4	6, 7 & 8	Ground

Cn1 Pin #	To	Pin #	Usage
2	Cn2	8	Vdd
4	Cn2	6	KBD Clock
6	Cn3	2	MSE Clock
8	Cn2	1	Speaker
10	Cn4	5 & 10	Ground
12	Cn4	14	V Sync
14	Cn4	2	Green
16	Cn4	12	DDC0 SDA
18	Cn4	3	Blue

Connector Details

Name	Usage	Type
Cn1	To CPU module ▪ J4	FCI Part Number 90311-018LF Female 18-Pin (9x2), 2.00mm pitch Minitex Connector
Cn2	To ACS-9079-00 ▪ J4	Female 10-pin (5x2), 2.54mm pitch IDC Connector
Cn3	To ACS-9079-00 (Mouse) ▪ J6	Tyco Part Number 280359 Female 4-pin (4x1), 2.54mm pitch MODU II Connector
Cn4	VGA	Female D-Sub 15-pin



**EuroTech SpA**  
 a member of the Eurotech Group  
 Via Fratelli Solari, 3/a  
 33020 Amaro (UD) - Italy  
 E-mail: sales@eurotech.it  
 Tel. +39 0433 485 411 Fax. +39 0433 485 499

DIGITAL TECHNOLOGIES FOR A BETTER WORLD

[www.eurotech.it](http://www.eurotech.it)

**Note:** The information in this document is subject to change without notice and should not be construed as a commitment by EuroTech S.p.A. While reasonable precautions have been taken, EuroTech S.p.A. assumes no responsibility for any error that may appear in this document.

All trademarks or registered trademarks are the properties of their respective companies.