

ACS-9092-02

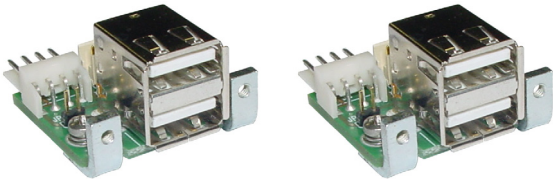
Two 2-port USB Adaptors

General Features

- The ACS-9092-02 is an adapter kit that has been developed by Eurotech to simplify the interfacing of USB peripherals with Eurotech CPU modules
- For use with: CPU-1452, CPU-1462, CPU-1472, CPU-1482 and ISIS
- RoHS Compliant

Kit Contents

- 2x 9C220600S1L: 2-Port USB adaptors



- 1x 7030000246L interface cable

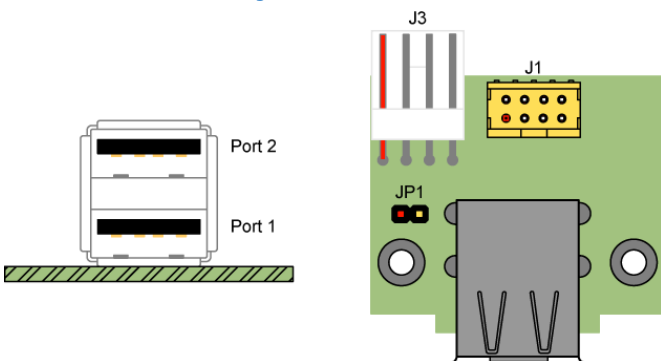


Related Parts

ACS-9092-00:

- Two 2-Port USB adaptors for use with: CPU-1233, CPU-1433, CPU-145x, 6x, 7x, 8x and ISIS.

9C220600S1L Layout



9C220600S1L Jumper Details

- JP1: External Power Routing
- Type: 2-pin, 2.00mm pitch

JP1	Definition
Open	Only Port 1 receives external power from J3
Closed	Port 1 and Port 2 receive external power from J3

9C220600S1L Connector Details

J1: Computer Interface

- Type: Male Minitex™ Shrouded Header, 8-pin, 2.00 mm pitch

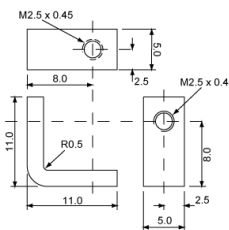
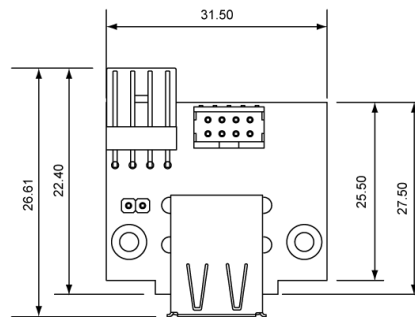
Pin #	Port #	Use	Pin #	Port #	Use
1	1	VDD 1	2	1	Ground
3	1	+ Data	4	1	- Data
5	2	VDD 2	6	2	Ground
7	2	+ Data	8	2	- Data

J3: External Power Input

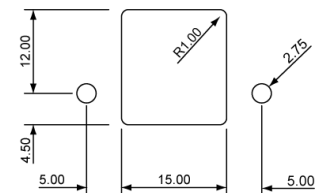
- Type: Male 4-pin 2.54mm pitch

Pin #	Use
1	VDD 1
2	Ground
3	Ground
4	Not Connected

9C220600S1L Mechanical Dimensions



1100000110L Mounting Brackets

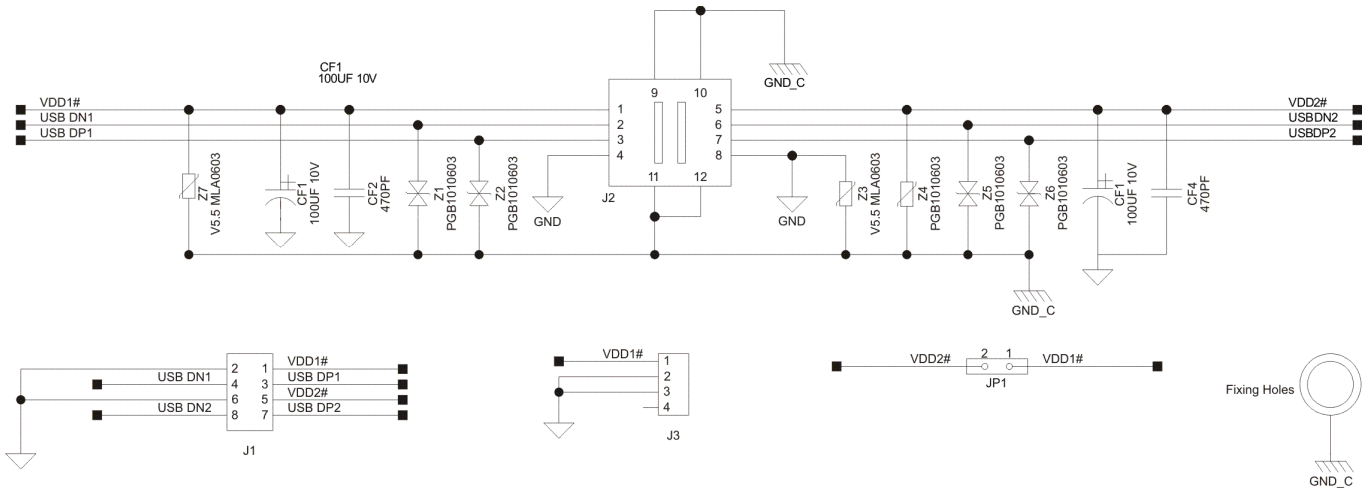


Front Mounting locations when using 1100000110L

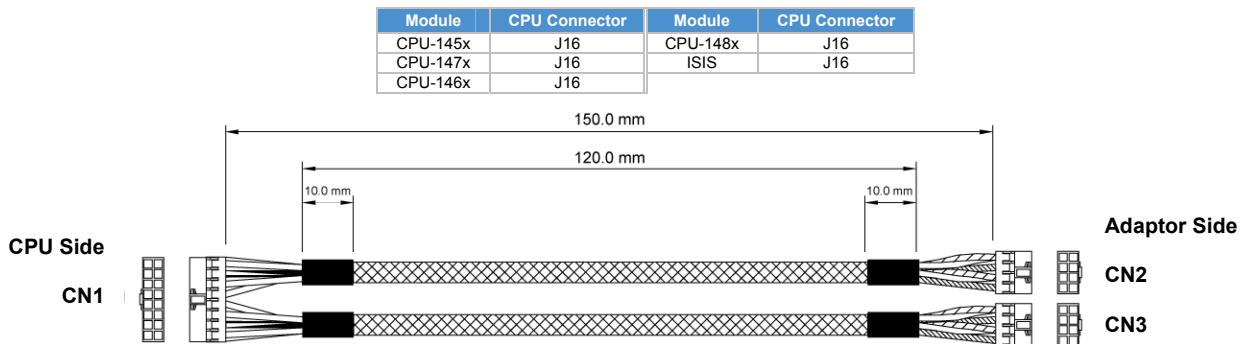
All dimensions in millimeters

ACS-9092-02

9C220600S1L Schematics

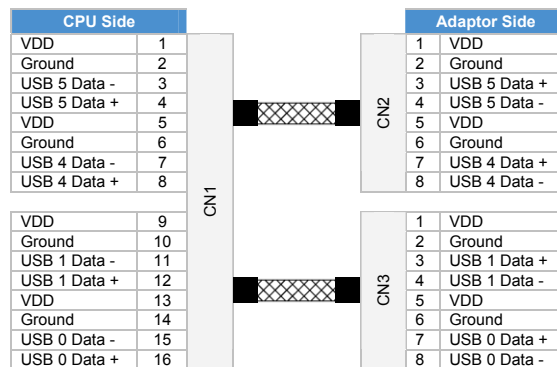


7030000246L



7030000246L Connector Details

- 1x Female Minitek IDC, 16-pin (8x2), 2.00 mm pitch
- 2x Female Minitek IDC, 8-pin (4x2), 2.00 mm pitch



ACS-9092-02_Td0002_Rev 1.2

Americas

EUROTECH Inc
 e-mail: sales-us@eurotech.com
 tel: +1 301.490.4007
 toll free: +1 888.941.2224

Western Europe

EUROTECH UK
 e-mail: sales-uk@eurotech.com
 tel: +44 (0) 1223 403.410

Central & Southern Europe

EUROTECH France
 e-mail: sales-fr@eurotech.com
 tel: +33 04.72.89.00.90

EUROTECH Italy
 e-mail: sales-it@eurotech.com
 tel: +39 0433.485.411

Northern & Eastern Europe

EUROTECH Finland
 e-mail: sales-fi@eurotech.com
 tel: +358 9.477.888.0