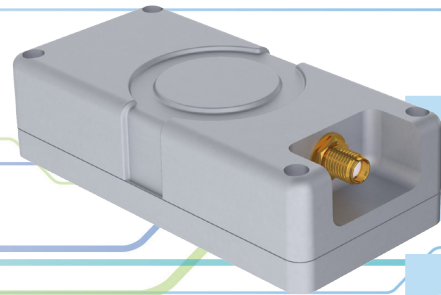


ReliaLORA 10-12

- LoRa Gateway for ReliaGATE
- EU and NA Bands
- Long Range (15 km/10 miles)
- Thousands of End-Point Nodes
- ISM Band Scan
- Listen Before Talk
- Open Platform



FEATURES

LoRa Gateway for ReliaGATE - Designed to be a companion for the ReliaGATE 10-12, expands the gateway capabilities with LoRa

EU and NA Bands - Supporting global deployment with European 868 MHz (863-870 MHz) and North American 915 MHz (902-928 MHz) bands

Long Range - Covering long distances: high power radio with 15 km / 10 miles line of sight range (2 km / 1.5 miles in urban conditions); European ISM transmit power / duty-cycle limitations are supported

Thousands of Nodes - Allowing bidirectional communications with thousands of end nodes.

ISM Band Scan - Providing optimal performance: allows end node frequency change to improve interference rejection and dynamic link rate adaptation

Listen Before Talk - Enabling the simultaneous sharing of the same channel by multiple users

Open Platform - Supported by Everyware Software Framework (ESF), the IoT Java/OSGi based middleware for IoT gateways that accelerates gateway development and enables remote management

ReliaLORA 10-12 is a LoRa Gateway module that adds LPWAN capabilities to the ReliaGATE 10-12.

Based on the Semtech SX1301 data concentrator, ReliaLORA 10-12 is an industrial grade expansion module. Fully compatible with existing LoRa infrastructures and capable of managing thousands of nodes, it is the fastest way to bridge an LPWAN with any cloud application.

ReliaLORA 10-12 is an industrial grade device that supports wide temperature range (-20 to +70°C) and comes in an impact-resistant ABS enclosure. Its compact design ensures simple deployment even in the most space-constraint applications.

ReliaLORA 10-12 is a global device that supports European and North America ISM bands; its long range radio reaches up to 15 km / 10 miles in unobstructed applications. In difficult environments, such as urban areas with multiple building its penetration reaches a radius of 2 km / 1.5 miles.

Robust interference rejection and dynamic link rate adaptation dramatically improve performance in crowded networks; further efficiency is provided by the Listen Before Talk protocol, which allows multiple users on the same channel.

ReliaLORA 10-12 is supported by Everyware Software Framework (ESF), a commercial, enterprise-ready edition of Eclipse Kura, the open source Java/OSGi middleware for IoT gateways.

Distributed and supported by Eurotech, ESF adds advanced security, diagnostics, provisioning, remote access and full integration with Everyware Cloud (EC), Eurotech's IoT integration platform (separately available).

Specifications

Ordering code: RELORA-10-12-XX		
XX	-01	-02
BASE BAND PROCESSOR	Data Concentrator	Semtech SX1301
I/O INTERFACES	Exp. Connector	Yes, for Side Expansion Modules
RADIO INTERFACES	LoRa Bands	European 868 MHz (863-870 MHz) North American 915 MHz (902-928 MHz)
	Sub Bands	Not Available 1 to 8
	Additional Channels	Default: 869.5 MHz Ranges: [863.5 to 867.5 MHz] and [869.1 to 869.5 MHz] Not Available
	Transmission Power	-6 to 26 dBm
	Antennas (External)	1x RP-SMA
POWER	Consumption	TBD
ENVIRONMENT	Operating Temp	- 20 to +70°C
	Storage Temp	- 40 to +85°C
CERTIFICATIONS	Regulatory	CE FCC/ISED
	Safety	EN60950 (Including UL Deviations to EN60950)
	Environmental	RoHS2; REACH
	ISM Radio	CE (RED) FCC/ISED
	Ingress	IP40
MECHANICAL	Enclosure	Material: ABS - Color: Aluminum
	Dimensions	96x21x45mm (LxWxH) - With Connectors

SOFTWARE	
IoT Framework	Everyware Software Framework (Java/OSGi)

Note: The information in this document is subject to change without notice and should not be construed as a commitment by EUROTECH. While reasonable precautions have been taken, EUROTECH assumes no responsibility for any error that may appear in this document. All trademarks or registered trademarks are the properties of their respective companies.

ETH_ReliaLORA 10-12_DS_EN_10/2017