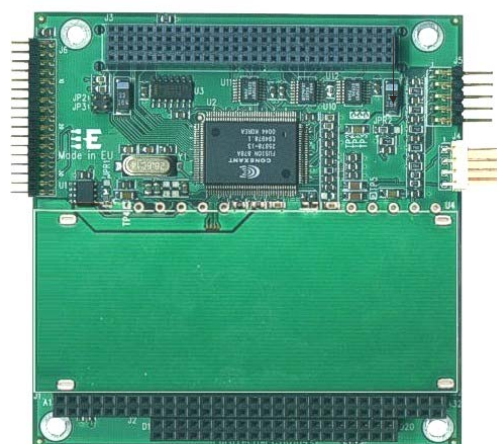




Features

- Frame Grabber module based on the Conexant Fusion 878A chip
- NTSC/PAL/SECAM video decoding
 - PAL: Frame rate 25 fps single channel
 - NTSC: Frame rate 30 fps single channel
- Supports capture resolutions up to 768 x 576 (full PAL)
- On-chip PCI bus mastering and bridge functionality
- Supports HDTV/audio/MPEG2 transport data across PCI bus
- High-speed parallel port supports MPEG transport streams up to 20 Mbps
- Flexible 24-bit wide GPIO
- CCIR656 interface
- Multiple YCrCb and RGB pixel formats and YUV planar formats supported on output
- Selectable pixel density: 8, 16, 24, and 32 bits per pixel
- Performs complex clipping of video source and VGA video overlay
- Permits different program control and color space/scaling for even and odd fields
- Integrates advanced chroma and luma comb filters/scalers
- Image scaleable in X and Y direction
- Y/C, 6-tap luma/2-tap chroma polyphase filter
- Includes VBI data capture (closed captioning, teletext, and Intercast data decoding)
- 100% PCI Rev. 2.2 compliant



General Description

The INT-1461 is a complete, low cost, single-chip solution for analog broadcast signal capture on the PCI bus. The INT-1461 takes advantage of the PCI-based system's high bandwidth and inherent multimedia capability. It is designed to be interoperable with any other PCI multimedia device.

The INT-1461 has all the video and audio capture features that allow you to put high performance multimedia functionalities into your Embedded System. Designed to address the demanding requirements of the digital video industry, the INT-1461 is fully PCI 2.2 compliant. It can capture single frames from up to 4 different analog video inputs at the same time.

The module can be used as a multimedia hub of an Embedded PC system connecting the multiple analog and digital video sources to the CPU module via a single PCI connection.

Physical Characteristics

Architecture:

- PC/104-Plus compliant

Dimensions:

- Compliant with the PC/104-Plus standard:
- 90L x 96W x 30H mm (3.6"x3.8"x1.7")

Bus:

- PCI bus (32-bit, 33MHz) according to the
- PC/104-Plus spec.

Power Supply:

- Single +5V

Power Consumption:

- 250mA @ 5V (typical)

Connectors:

- 4 composite video input / 3 composite video input + 1 S-VHS video input
- 1 Audio Line In
- 24 General purpose Digital I/O
- PC/104 bus connector
- PC/104-Plus bus connector

Operating temperature:

- 0°C/+60°C
(Extended temperature range versions available)

Storage temperature:

- -40°C/+85°C

Applications

- Video capture
- Multimedia hub of an Embedded PC system
- Digital VCR
- Still frame capture
- Vertical blanking interval (VBI) data service

Options

- Conformal Coating
- Extended Operating Temperature Range
- Custom Connectors



Tel. +39 0433 485 411

Fax. +39 0433 485 499

E-mail: sales@eurotech.itURL: www.eurotech.it

Note. The information in this document is subject to change without notice and should not be construed as a commitment by EuroTech S.p.A. While reasonable precautions have been taken, EuroTech S.p.A. assumes no responsibility for any error that may appear in this document. All trademarks or registered trademarks are the properties of their respective companies.