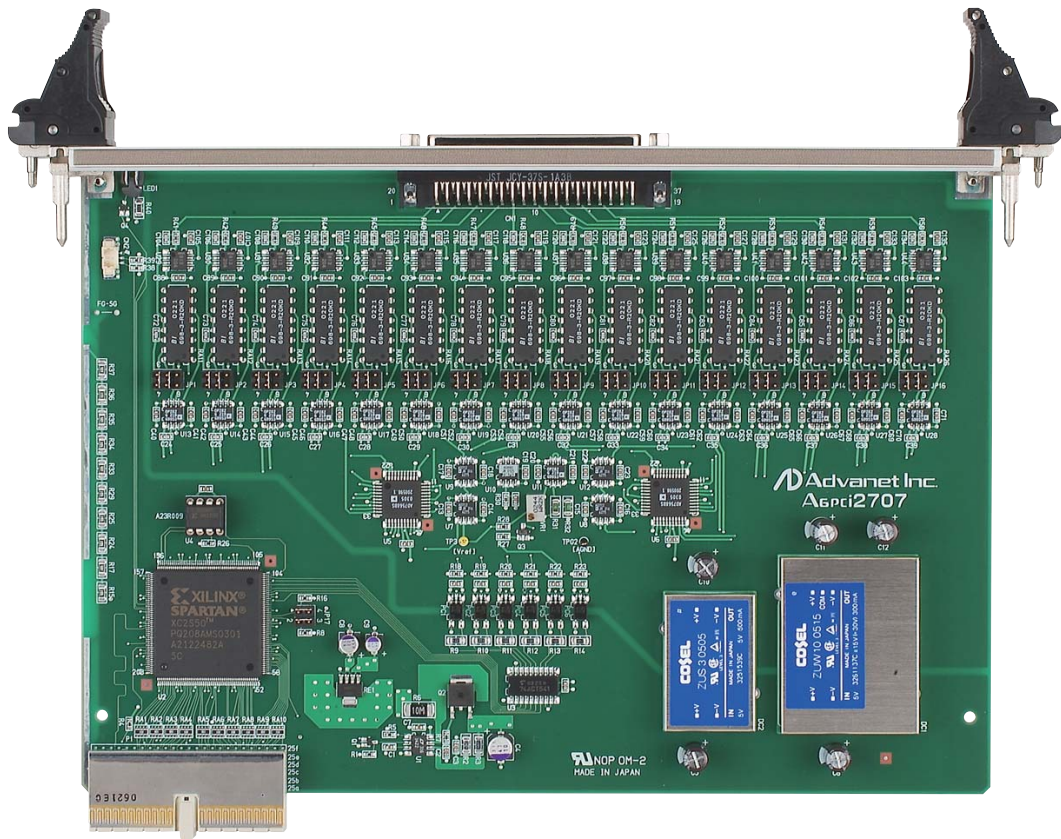


A6pci2707A

Isolated 16-ch D/A Board



Features

- 6U (double height), single slot width CompactPCI bus analog output board
- Equipped with a 12-bit resolution D/A converter
- Equipped with 16 analog output channels
- Output voltage range can be set to $\pm 10V$, 0 to 10V or 0 to 5V for each channel
- Analog output and digital system isolated by photo-coupler
- When the power is turned on and when reset is performed, the output voltage is forced to 0V for all channels
- Two-layer output buffer for refreshing the output voltage for each channel individually or for all channels at once
- Full HotSwap support

Specifications

- Analog output
 - No. of channels 16 channels
 - Input voltage range $\pm 10V$, 0 to 10V, 0 to 5V
 - Isolation method Photo-coupler isolation (no isolation between channels)
 - Withstanding voltage AC500V for one minute
 - Protection circuitry Overvoltage protection circuitry
- D/A conversion
 - Resolution 12-bit
 - Overall accuracy $\pm 0.3\%$
 - Conversion time 10 μ sec per channel
 - D/A converter AD7568 (Analog-Devices original)
- Bus interface
 - PCI Local Bus Specification Rev.2.2 compliant
 - PICMG 2.0 R3.0 CompactPCI Specification compliant
 - PICMG 2.1 R1.0 CompactPCI Hot Swap Specification
- Power requirements
 - DC5V/3.3V $\pm 5\%$ (supplied by C-PCI bus)
- Board size
 - 6U single slot width
- Connector
 - 37-pin Dsub connector (female)



HUMAN ELECTRONICS

Advanet Inc.
www.advanet.co.jp

Note: The following specifications and product appearance are subject to change for enhancement without notice.


ISO9001
 Certification: No.4016-1995-AQ-KOB-Rv4

ISO14001
 Certification: No. EMSC-1426

Headquarters 616-4, Tanaka, Okayama 700-0951 JAPAN
 TEL +81-86-245-2861 FAX +81-86-245-2860

Tokyo Branch 3F, Hayakawa No.3 Building, 2-2Kanda-Tacho, Chiyoda-ku, Tokyo 101-0046 JAPAN
 TEL +81-3-5294-1731 FAX +81-3-5294-1734