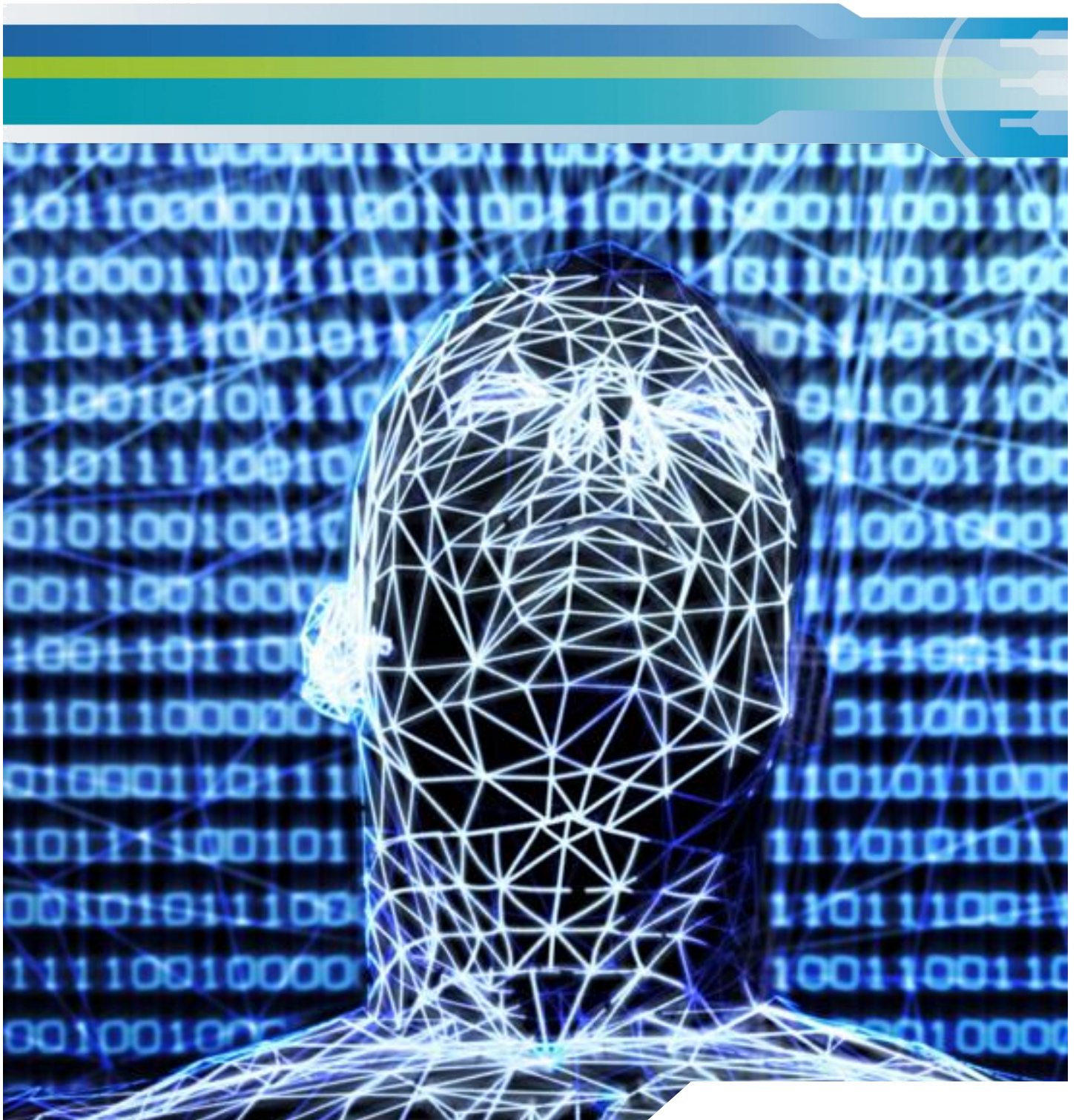


## EUROTECH: DEVICE DATA TO THE ENTERPRISE

With its newly launched Everyware Cloud 2.0 platform, Eurotech has combined proven cloud, embedded and Internet of Things (IoT) technologies to provide a means to connect and control an infinite range of smart devices and sensors deployed in the field to Enterprise applications.

## SOLUTION OVERVIEW

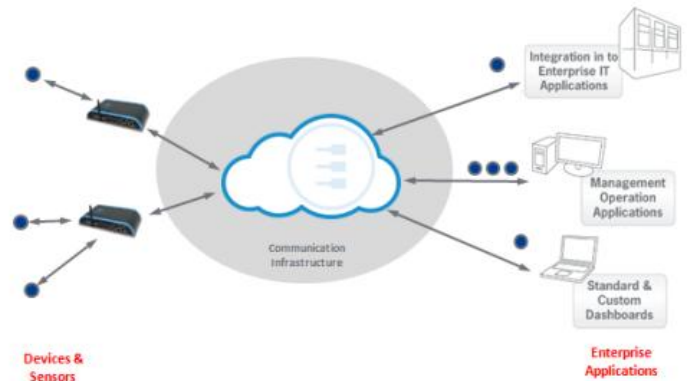


## EUROTECH: DEVICE DATA TO THE ENTERPRISE

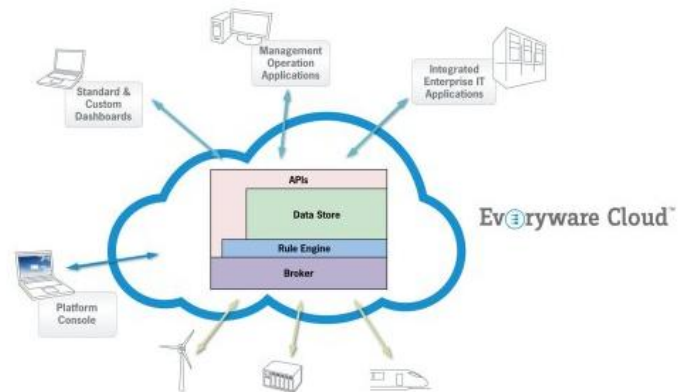
Leveraging the Eurotech M2M Integration Platform, data from embedded devices is securely collected, stored, analysed and acted upon in real time, offering a powerful resource for data communication and management suitable for industry sectors ranging from transport, energy and industry to healthcare. Everyware Cloud provides the connectivity environment between business applications - such as database, ticketing, track & trace, ERP and CRM - and the in-field gateways that in turn link to sensors, actuators, etc.



The flexibility and scalability of the Everyware Cloud platform allows developers to build applications that are integrating device data simply and rapidly. The platform delivers significant reductions in the time and costs of development providing reliable, device independent, secure M2M infrastructures to the developers so they can speed-up and lower the risk of building an end-to-end M2M Project.



Everyware Cloud offers the possibility to connect any type of third party device: C++ Client and Java Client are both available free of charge from the Eurotech web site. Once the device is connected with the platform all the advanced data services offered are available with no further effort: data storage, real time triggers, data access and device management as well.



Other key features of Eurotech Everyware Cloud include:

- MQTT open standard efficient embedded M2M protocol for message transport

## EUROTECH: DEVICE DATA TO THE ENTERPRISE

- REST APIs providing easy-to-use, feature rich functionality for enterprise developers
- Real Time Rule Engine to analyse and act on data, e.g., if an increase in room temperature above agreed parameters is identified, it will generate an email or SMS to a set of users and/or send a trigger to the device or an external system
- Schema-less, distributed, decentralised database for data aggregation and advanced queries
- Integrated visualisation via Google Chart Tools
- Web based console offering optimum GUI for device, data and user management during development



For more information on Eurotech please visit our website [www.eurotech.com](http://www.eurotech.com) or find your local sales team at

<http://www.eurotech.com/en/about+eurotech/contact+us>

The value of Everyware Cloud is increased by the pay-as-you-go business model offered by Eurotech, requiring no initial investment and costing only on the number of devices and applications used in a given project. The platform makes it possible to modulate the size of infrastructure, testing with a few sample devices to begin with and then scaling up the potential to tens of thousands of units.

Everyware Cloud is designed to support developers in meeting the challenges of expansion and change, building applications for the future that will stand the test of time.