

Boards Overview

		NXP i.MX6	Intel Atom		Intel Core i	Intel Xeon
			Legacy	BT		
CPU Module	Catalyst	CPU-301-16	Catalyst TC	Catalyst BT		
	COM Express Type 10			CPU-163-15		
	COM Express Type 6				CPU-161-17 CPU-162-22	CPU-161-18
SBC	Other (EPIC, EBX, ETC)	CPU-351-13				
	Mini-ITX				CPU-521-17	
	Pico-ITX	CPU-523-13				

Enabling Embedded IoT Professional Services

Eurotech strategy is based on products that comply to industry standards. However some projects require an extra ingredient. Our personalization and configuration service allows a perfect match of your needs, implementing your unique design

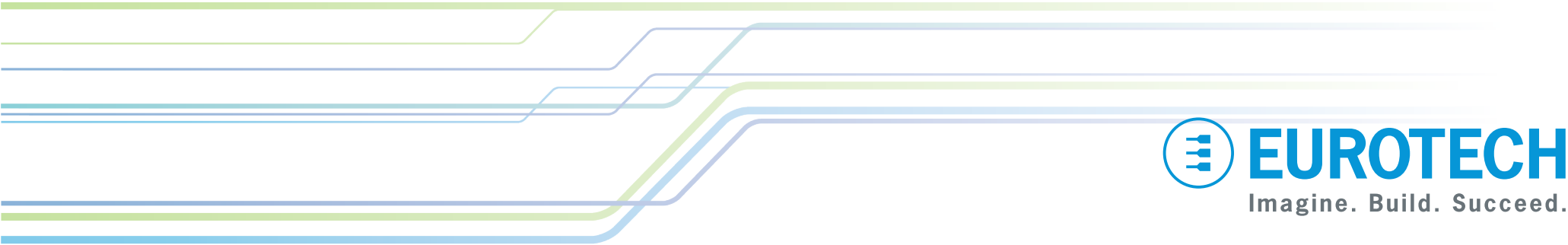
Eurotech, with its own experienced Embedded engineers, is available to work closely to customers and partners in order to understand these unique needs with a suite of consulting and professional services. Our engineering teams can develop tailor-made boards and systems using the same professional design approach that is used to create our standard portfolio.

- BIOS/Firmware customization
- Software pre-installation
- Hardware options
- Choice of connectors
- Conformal coating
- Special testing/qualification
- Carrier Board design and development

Eurotech also provides professional services to enable your embedded products for the Internet of Things.

With Eurotech support, you can discover the competitive advantage that these new technologies can bring to your organization and be on the right track for a quick deployment on proven platforms and solutions.

Experienced IoT engineers are available to work closely with you to understand your unique needs. Through the analysis of your business processes and business drivers, we will work together to leverage Eurotech IoT solutions to improve your business through: cost minimization, increased productivity and efficiency, new business models and service revenue streams.



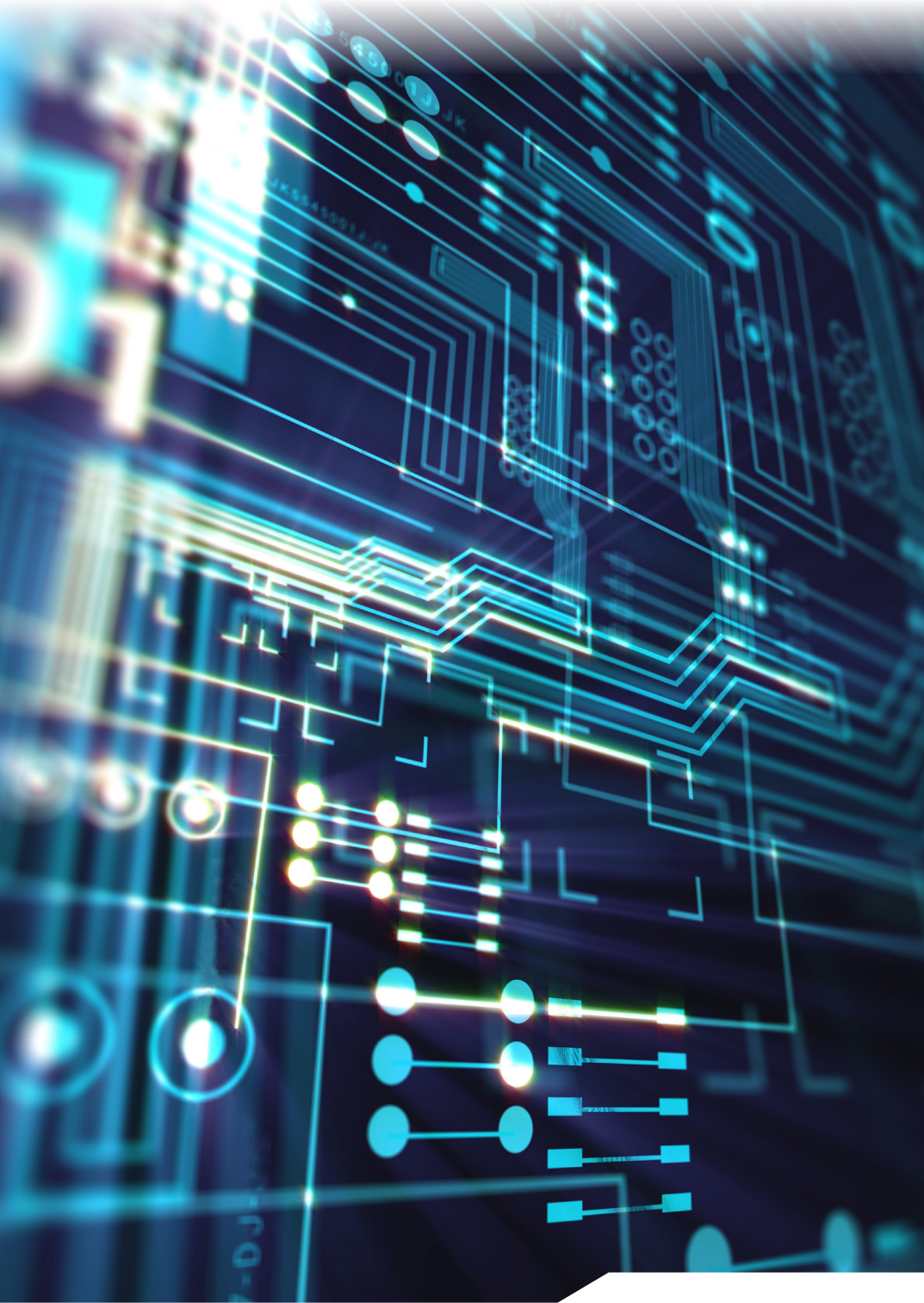
EUROTECH

North America
sales.na@eurotech.com

Europe, Middle East and Africa
sales.emea@eurotech.com

Latin America
sales.la@eurotech.com

Asia Pacific
sales.ap@eurotech.com

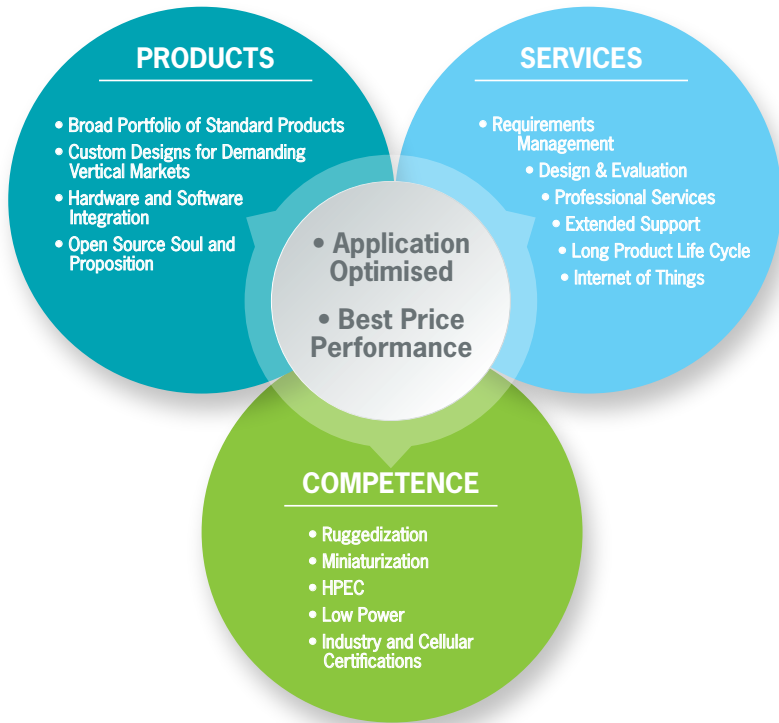


Note: The information in this document is subject to change without notice and should not be construed as a commitment by Eurotech. While reasonable precautions have been taken, Eurotech assumes no responsibility for any errors that may appear in this document. All trademarks or registered trademarks are the properties of their respective companies.
© Copyright Eurotech 2017. All rights reserved.

Embedded Solutions

Eurotech Embedded Boards and Solutions are designed to match the needs of extremely demanding customers. Eurotech has a complete portfolio of boards and embedded modules with CPU processor based on the state of the art architectures: Intel® Atom™, Core™ i, Xeon™, x86, PowerPC, ARM and NXP QorIQ. The boards are either CPU boards or single board computer - SBC - available in many form factors: COM Express®, VME, OpenVPX, CompactPCI, cPCI Express, PC 104 and PC/104 Plus, EPIC, EBX, and very low power Small form factors modules.

Eurotech complete portfolio of embedded processor, communication and I/O modules, is suitable for a range of applications including Industrial, Transportation, Defense, Infotainment and many others. In particular, Eurotech ruggedized boards powered by processors like the Intel Xeon-D are a perfect fit for the emerging market of edge computing nodes and **High Performance Embedded Computing (HPEC)** applications.

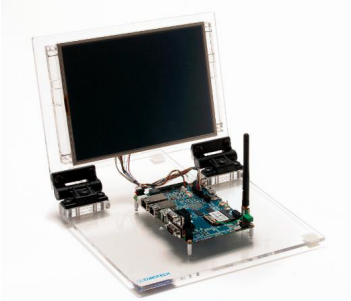


Development Kits
Great Out of the Box Experience

Eurotech offers a wide range of ready-to-use Development Kits which pair the chosen embedded processor board platforms with the most popular embedded operating systems.

The key to a great development kit is how quickly a customer can get it up and running, so the customer can get to the task of developing the application and the device. Develop faster and more simply, get the device to market more quickly and start bringing in revenue sooner.

Eurotech development kits help OEM engineers reduce the time to market by essentially eliminating the driver development, operating system development, and middleware development of device engineering.



Boards Selection

Board	CPU	RAM	STORAGE	Ethernet	USB	Serial	CAN 2.0B	Digital I/O	Video	PCIe	Power	Op.Temp.
CPU-301-16 Module (85x67)	NXP i.MX6 Solo, up to 1.0GHz Dual Lite, up to 1.0GHz Dual Core, up to 1.2GHz Quad Core, up to 1.2GHz	512MB DDR3 1GB DDR3	4GB eMMC Up to 1x SATA 2.0	1x Gb	1x USB2.0 1x USB2.0	4x UART	2	21	1x Digital 2x LVDS 1x HDMI MIPI DSI	1x PCIe 2.0 x1	< 1W Typ. 5W Max	0 to +70 °C -40 to +85 °C
CPU-351-13 SBC (153x102)	NXP i.MX6 Solo, up to 1.0GHz Dual Lite, up to 1.0GHz Dual Core, up to 1.2GHz Quad Core, up to 1.2GHz	512MB DDR3 1GB DDR3	4GB eMMC Up to 1x SATA 2.0	2x Gb	3x USB2.0 1x USB2.0	2x RS-232/422/485 2x RS-232 (Opt.)	1	8	1x Digital 1x LVDS Touch Ctrl.	1x Mini PCIe	4W	-40 to +85 °C
CPU-523-13 pico ITX	NXP i.MX6 Dual Lite, 1.0GHz Quad Core, 1.2GHz	1GB DDR3L	8GB eMMC 1x SATA 2.0	1x Gb	2x USB 2.0 1x USB 2.0	1x RS-485 1x RS-232/422/485 1x RS-422/485	1	8	1x LVDS	1x Mini PCIe	3W	-20 to +70 °C
Catalyst BT Module (100x67)	Intel Atom E3815 1.46GHz, 1 Core E3827 1.75GHz, 2 Cores E3845 1.91GHz, 4 Cores	2GB DDR3L ECC 4GB DDR3L ECC	Up to 32GB eMMC 2x SATA 2.0	1x Gb	8x USB 2.0	1x UART	N	6	1x eDP/DP/HDMI/LVDS 1x eDP/DP/HDMI/VGA	3x PCIe x1	5~10W	-40 to +85 °C
CPU-163-15 COME Type 10 Mini	Intel Atom E3815 1.46GHz, 1 Core E3827 1.75GHz, 2 Cores E3845 1.91GHz, 4 Cores	2GB DDR3L ECC 4GB DDR3L ECC	8GB eMMC 2x SATA 2.0	1x Gb	1x USB 3.0 8x USB 2.0	2x TTL	N	8	1x LVDS 1x DDI	3x PCIe x1	5~10W	-20 to +70 °C -40 to +85 °C
CPU-161-17 COME Type 6 Compact	Intel Celeron, Core i5, i7 3955U 2.00GHz, 2 Cores i5-6300U 2.40GHz, 2 Cores i7-6600U 2.60GHz, 2 Cores	2x SO-DIMM DDR3L (up to 16GB)	Up to 3x SATA 3.0 RAID Support	1x Gb	4x USB 3.0 4x USB 2.0	2x UART	N	8	1x LVDS 1x DDI 1x VGA	8x PCIe x1	7.5~15W	-40 to +85 °C
CPU-161-18 COME Type 6 Compact	Intel Xeon D, Pentium D D-1559 1.5GHz, 12 Cores D-1539 1.6GHz, 8 Cores D-1519 1.5GHz, 4 Cores	8GB Soldered DDR4 ECC 1x SO-DIMM DDR4 (Up to 16GB)	4x SATA 3.0 RAID Support	1x Gb	4x USB 3.0 7x USB 2.0	2x UART	1	8	N	1x PCIe x16 + 2x PCIe x8 (Ø)	25~45W	-25 to +70 °C
CPU-162-22 COME Type 6 Basic	Intel Celeron, Core i5, i7 G3902E 1.60GHz, 2 Cores i5-6442EQ 1.90GHz, 4 Cores i7-6822EQ 2.00GHz, 4 Cores	2x SO-DIMM DDR4 (Up to 32GB)	4x SATA 3.0 RAID Support	1x Gb	4x USB 3.0 4x USB 2.0	2x UART	2	8	1x LVDS 1x DDI 1x VGA	1x PCIe x16 + 2x PCIe x8 (Ø)	25~35W	-40 to +85 °C
CPU-521-17 mini ITX	Intel Celeron, Core i5, i7 3955U 2.00GHz, 2 Cores i5-6300U 2.40GHz, 2 Cores i7-6600U 2.60GHz, 2 Cores	2x SO-DIMM DDR3L (Up to 16GB)	2x SATA 3.0 RAID Support	2x Gb	4x USB 3.0 4x USB 2.0	2x RS-232/422/485 2x RS-232	1	8	1x LVDS 1x HDMI 1x DP++	1 x PCIe x4 2x Mini PCIe	7.5~15W	-20 to +70 °C

Visit www.eurotech.com or contact Eurotech Sales for a broader selection of boards with alternative CPUs and form factors. Eurotech board portfolio includes the VME, CompactPCI, and OpenVPX form factor and High Performance Boards powered by Intel Xeon E3 and Xeon E5.