

# CBL-1212-00

## CABLE-SET FOR THE CPU-1212

### CBL-1212-00 Cable Set

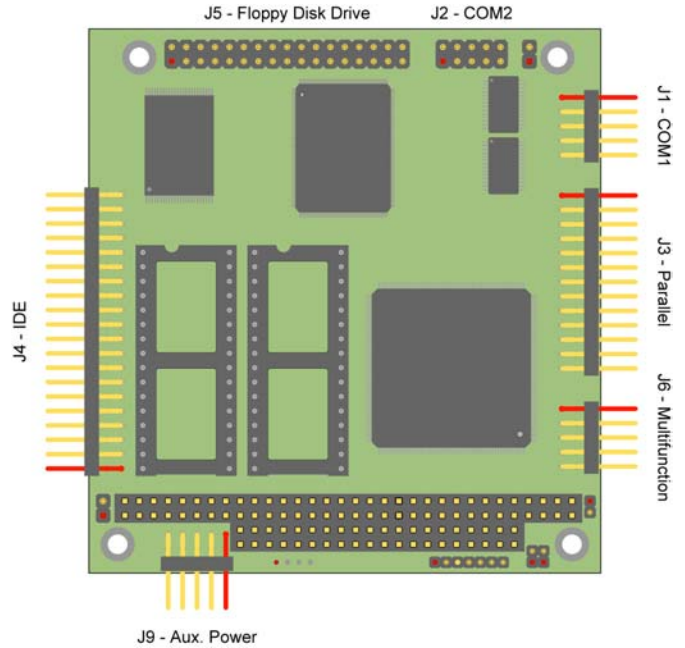
#### Cable Set Overview

- The CBL-1212 Cable set is intended to enable customers to start rapidly developing solutions using the CPU-1212 range of modules.
- All the Cables and adaptors are fully RoHS compliant.
- Users should refer to the Module documentation, available from the Eurotech Website in the DownLoad Area, before attempting to use the Module of Cable set.
- Customers should note that all images contained within this document are only intended as a guide, actual cables may vary, but will always meet or exceed the specifications as shown.

#### Cable Set Contents

- 1x 7000000003L: Floppy Disk Cable
- 1x 7000000004L: IDE Cable
- 2x 7000000030L: 2x Single COM Ports
- 1x 7000000031L: Parallel Port
- 1x 7020000010L: Auxiliary power input
- 1x ACS-9079-00: Multifunction Adaptor
- 1x 7000000091L: CPU to ACS-9079-00

#### CPU-1212 Connector Locations



### 7000000091L: CPU to Multifunction Adaptor



#### Connector Pinout

Cn1 Pin #	Cn2 Pin #	Usage
1	1	Speaker
3	3	Reset
5	5	Keyboard Data
7	7	Ground
9	9	V-Battery

Cn1 Pin #	Cn2 Pin #	Usage
2	2	+5 Volts
4	4	Not Connected
6	6	Keyboard Clock
8	8	+5 Volts
10	10	Not Connected

#### Connector Details

Name	Usage	Type
Cn1	To CPU-1212 ▪ J6	Female 10-Pin (5x2), 2.54mm pitch IDC Connector
Cn2	To ACS-9079-00 ▪ J4	Female 10-Pin (5x2), 2.54mm pitch IDC Connector

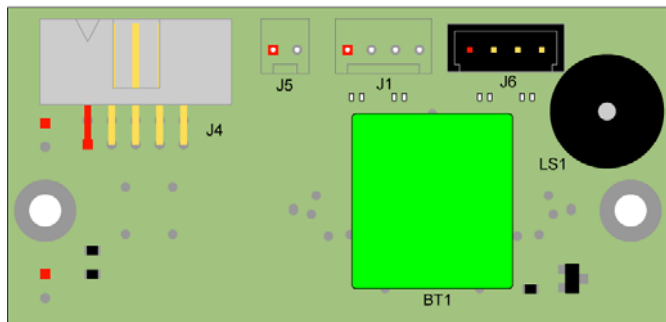
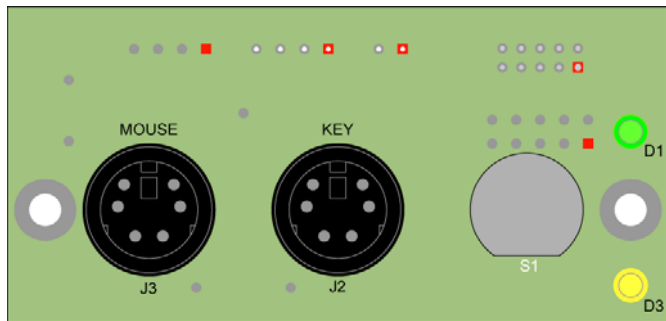
ACS-9079-00: Multifunction Adaptor



Connector Usage

- J1: Not mounted as standard
- J2: Keyboard
  - Standard PS2 style keyboard connector
- J3: Mouse
  - Standard PS2 style Mouse connector
- J4: Main Interface to CPU-1212 module
  - Male Shrouded IDC Header
  - 10pin (5x2)
  - 2.54mm pitch
  - Use 7000000091L to connect to CPU

Connector Layout



Pin #	Use	Pin #	Use
1	Speaker	2	+5V
3	Reset	4	Not Connected
5	Keyboard Data	6	Keyboard Clock
7	Ground	8	+5V
9	VBAT	10	VPP

- J5: Not mounted as standard
- J6: Mouse interface
  - Male Shrouded IDC Header
  - 4pin (4x1)
  - 2.54mm pitch

Pin #	Use	Pin #	Use
1	VCC	2	Mouse Clock
3	Ground	4	Mouse Data

\* This connector is not utilised with the CPU-1212

Other Components

- BT1: Backup Battery
  - Ni-MH
  - 3.6V
  - 60mAh
- LS1: Miniature Speaker
- S1: Reset Push-button
- D1: Green LED
  - Power present
- D3: Yellow LED
  - Activity



**EuroTech SpA**  
 a member of the Eurotech Group  
 Via Fratelli Solari, 3/a  
 33020 Amaro (UD) - Italy  
 E-mail: [sales@eurotech.it](mailto:sales@eurotech.it)  
 Tel. +39 0433 485 411 - Fax. +39 0433 485 499

DIGITAL TECHNOLOGIES FOR A BETTER WORLD

[www.eurotech.it](http://www.eurotech.it)

*Note: The information in this document is subject to change without notice and should not be construed as a commitment by EuroTech S.p.A. While reasonable precautions have been taken, EuroTech S.p.A. assumes no responsibility for any error that may appear in this document.*

*All trademarks or registered trademarks are the properties of their respective companies.*

# CBL-1212-00

## CABLE-SET FOR THE CPU-1212

### 700000003L: Floppy Disc



#### Connector Pinout

Cn1 Pin #	Cn2 Pin #	Usage	Cn1 Pin #	Cn2 Pin #	Usage
1	1	Ground	2	2	Drive Density 0
3	3	Ground	4	4	Not Connected
5	5	Ground	6	6	Drive Density 1
7	7	Ground	8	8	Index
9	9	Ground	10	10	Motor Enable Drive 0
11	11	Ground	12	12	Drive Select 1
13	13	Ground	14	14	Drive Select 0
15	15	Ground	16	16	Motor Enable Drive 1
17	17	Ground	18	18	Direction Select
19	19	Ground	20	20	Head Step
21	21	Ground	22	22	Write Data
23	23	Ground	24	24	Floppy Write Enable
25	25	Ground	26	26	Track 00
27	27	Ground	28	28	Write Protect
29	29	Ground	30	30	Read Data
31	31	Ground	32	32	Head Select
33	33	Ground	34	34	Disk Change

#### Connector Details

Name	Usage	Type
Cn1	To CPU-1212 ▪ J5	Adimpex Part # IT000134-R Female 34-Pin (17x2), 2.54mm pitch IDC Connector
Cn2	Floppy Disc Drive	Adimpex Part # IT000134-R Female 34-Pin (17x2), 2.54mm pitch IDC Connector

### 7000000030L: Serial Port



#### Connector Pinout

Cn1 Pin #	Cn2 Pin #	Usage	Cn1 Pin #	Cn2 Pin #	Usage
1	1	Data Carrier Detect	2	6	Data Set Ready
3	2	Receive Data	4	7	Request To Send
5	3	Transmit Data	6	8	Clear To Send
7	4	Data Terminal Ready	8	9	Ring Indicator
9	5	Ground	10	-	Not Connected

#### Connector Details

Name	Usage	Type
Cn1	To CPU-1212 ▪ J1: COM1 or ▪ J2: COM2	Female 10-Pin (5x2), 2.54mm pitch IDC Connector
Cn2	COM Port	Male 9-Pin D-Sub

700000004L: 1x IDE



Connector Pinout

Cn1 Pin #	Cn2 Pin #	Usage
1	1	Reset
3	3	Data 7
5	5	Data 6
7	7	Data 5
9	9	Data 4
11	11	Data 3
13	13	Data 2
15	15	Data 1
17	17	Data 0
19	19	Ground
21	21	Not Connected
23	23	Write Strobe
25	25	Read Strobe
27	27	IO_CH_RDY
29	29	VDD
31	31	IRQ14
33	33	Address 1
35	35	Address 0
37	37	IDE_CS0
39	39	LED Driver

Cn1 Pin #	Cn2 Pin #	Usage
2	2	Ground
4	4	Data 8
6	6	Data 9
8	8	Data 10
10	10	Data 11
12	12	Data 12
14	14	Data 13
16	16	Data 14
18	18	Data 15
20	20	Key
22	22	Ground
24	24	Ground
26	26	Ground
28	28	Address Latch Enable
30	30	Ground
32	32	IO Chip Select 16
34	34	Not Connected
36	36	Address 2
38	38	IDE_CS1#
40	40	Ground

Connector Details

Name	Usage	Type
Cn1	To CPU-1212 ▪ J4	Female 40-Pin (20x2), 2.54mm pitch IDC Connector
Cn2	Floppy Disc Drive	Female 40-Pin (20x2), 2.54mm pitch IDC Connector

7020000010L: Auxiliary Power Input



Connector Pinout

Pin #	Colour	Use
1	Black	Vdd (+5 Volts)
3	Green	-5 Volts
5	Yellow	+12 Volts
7	White	-12 Volts
9	Red	Ground

Pin #	Colour	Use
2	Black	Vdd (+5 Volts)
4	Green	-5 Volts
6	Yellow	+12 Volts
8	White	-12 Volts
10	Red	Ground

Connector Details

Name	Usage	Type
Cn1	To CPU-1212 ▪ J9	Female 10-Pin (5x2), 2.54mm pitch IDC Connector



**EuroTech SpA**  
 a member of the Eurotech Group  
 Via Fratelli Solari, 3/a  
 33020 Amaro (UD) - Italy  
 E-mail: [sales@eurotech.it](mailto:sales@eurotech.it)  
 Tel. +39 0433 485 411 - Fax. +39 0433 485 499

DIGITAL TECHNOLOGIES FOR A BETTER WORLD

[www.eurotech.it](http://www.eurotech.it)

**Note:** The information in this document is subject to change without notice and should not be construed as a commitment by EuroTech S.p.A. While reasonable precautions have been taken, EuroTech S.p.A. assumes no responsibility for any error that may appear in this document.

All trademarks or registered trademarks are the properties of their respective companies.

# CBL-1212-00

## CABLE-SET FOR THE CPU-1212

### 7000000031L: Parallel Port



#### Connector Pinout

Cn1 Pin #	Cn2 Pin #	Usage
1	1	-Strobe#
3	2	+Data Bit 0
5	3	+Data Bit 1
7	4	+Data Bit 2
9	5	+Data Bit 3
11	6	+Data Bit 4
13	7	+Data Bit 5
15	8	+Data Bit 6
17	9	+Data Bit 7
19	10	-Acknowledge
21	11	+Busy
23	12	+Paper End
25	13	+Select

Cn1 Pin #	Cn2 Pin #	Usage
2	14	-Auto Feed
4	15	-Error / Fault
6	16	-Printer Initiate
8	17	-Select
10	18	Ground
12	19	Ground
14	20	Ground
16	21	Ground
18	22	Ground
20	23	Ground
22	24	Ground
24	25	Ground
26	--	Not Connected

#### Connector Details

Name	Usage	Type
Cn1	To CPU-1212 ▪ J3	Female 26-Pin (13x2), 2.54mm pitch IDC Connector
Cn2	Parallel Port	Female 25-Pin DB25