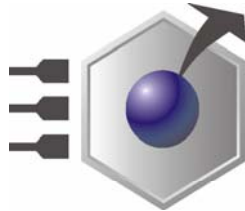


EmbeddedDNA[®]



An0069

**Differences between
the CPU-1232 and CPU-1233**

Rev. 1.0

Nov. 2006

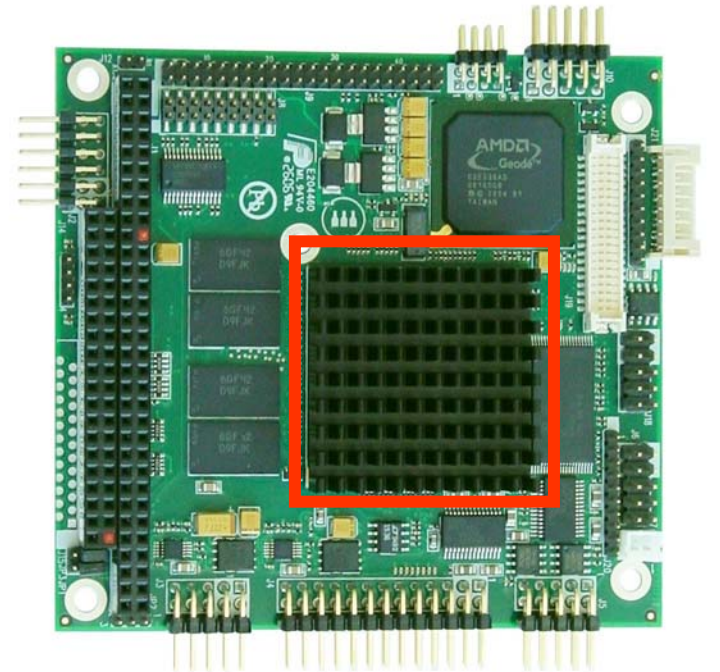
COPYRIGHT 1994-2006 Eurotech S.p.A. All Rights Reserved.

CPU-1233 Features

Primary Features

Processor

- AMD Geode GX2
- 333MHz



Differences

CPU-1232 had an AMD Geode GX1 @ 266MHz

CPU-1233 Features

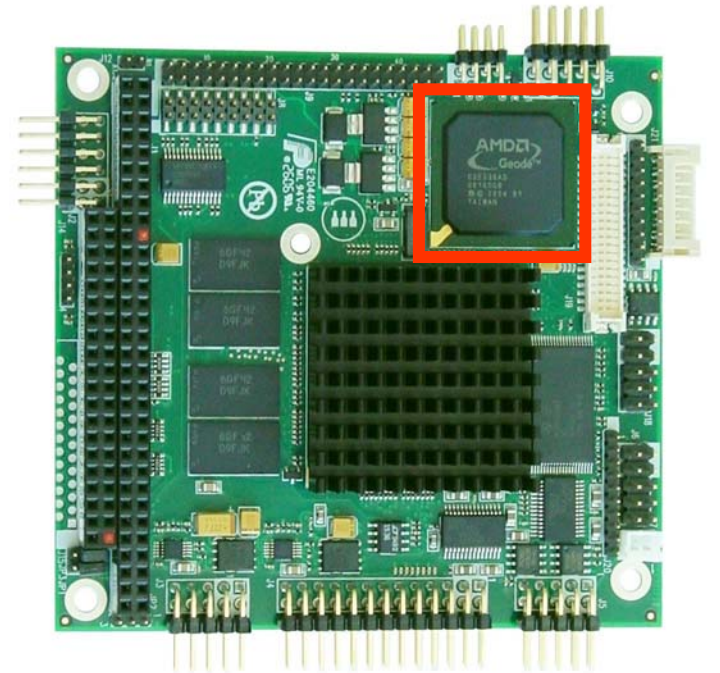
Primary Features

Processor

- AMD Geode GX2
- 333MHz

Companion Chipset

- AMD CS5536AD



Differences

CPU-1232 had an AMD CS5530A

CPU-1233 Features

Primary Features

Processor

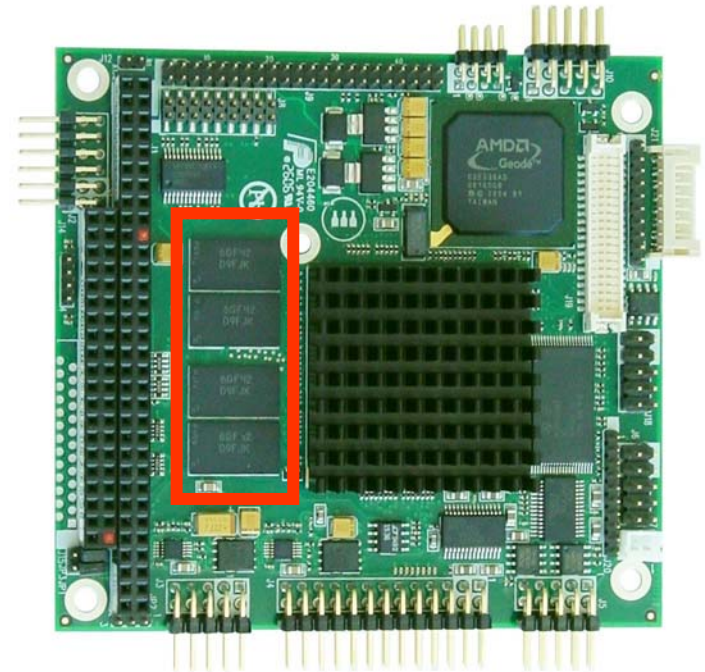
- AMD Geode GX2
- 333MHz

Companion Chipset

- AMD CS5536AD

Memory

- 128MB DDR SDRAM as standard
- Soldered Onboard



Differences

CPU-1232 was 128MB SDRAM, not DDR.

CPU-1233 Features

Primary Features

Processor

- AMD Geode GX2
- 333MHz

Companion Chipset

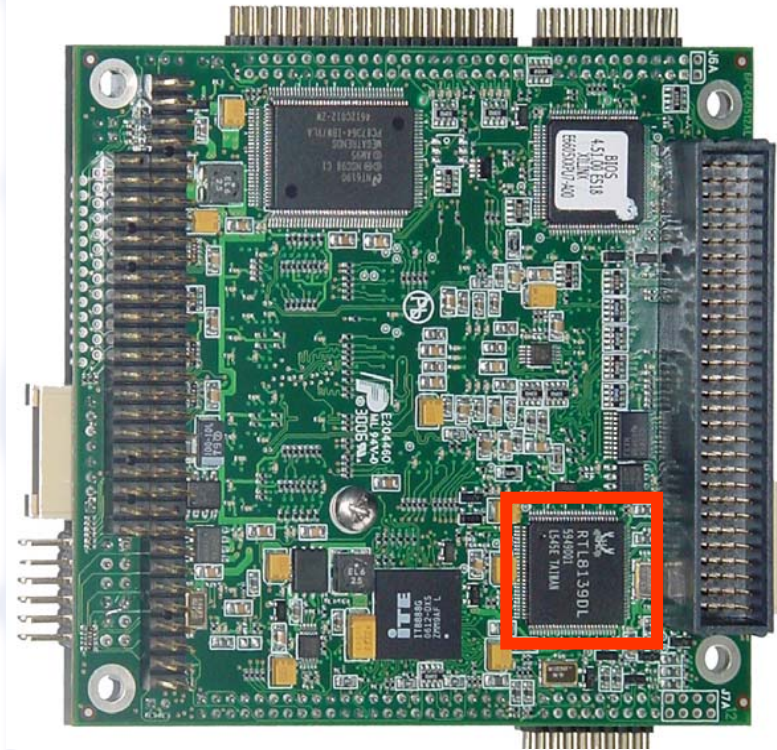
- AMD CS5536AD

Memory

- 128MB SDRAM
- Soldered Onboard

Ethernet

- Realtek 8139DL
- 10/100Mbps



Differences

CPU-1232 had a Realtek 8139C

CPU-1233 Connectivity

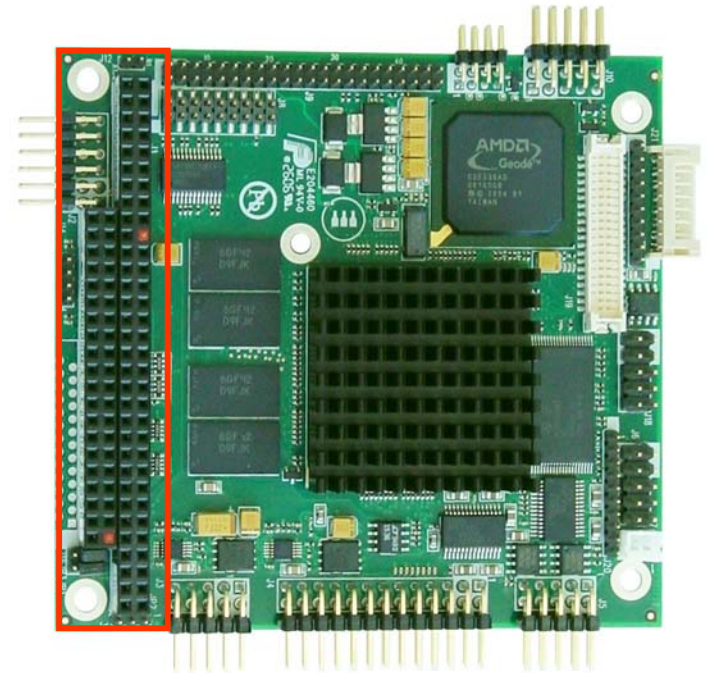
Standard Connectors

ISA Bus

- Fully PC104 Compliant
- Specification IEEE P996

Connector

- J1 & J2
- J1 - 32 x 2 pins
- J2 - 20 x 2 pins
- 2.54mm pitch



Differences
No Change

CPU-1233 Connectivity

Standard Connectors

IDE Interface

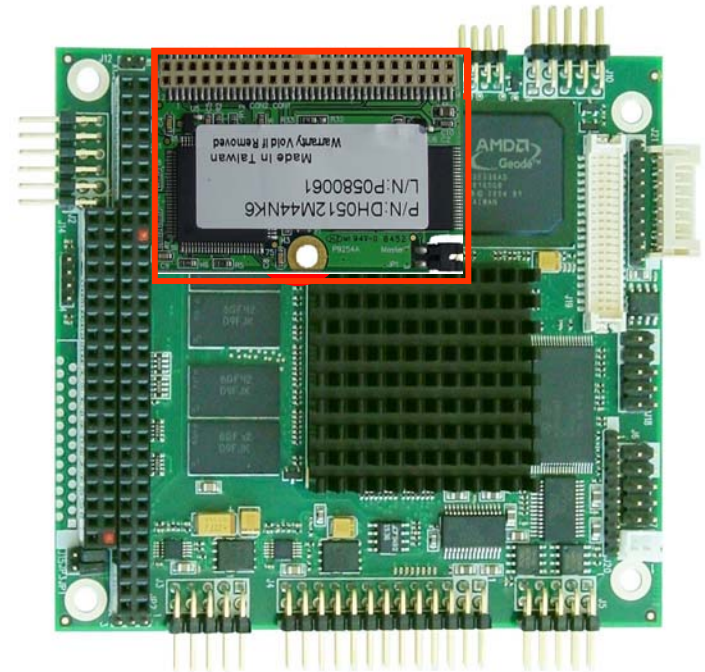
- **ATA-6 Compliant**

Connector

- **J9**
- **22 x 2 pins**
- **2.00mm pitch**

Other

- **Mounting point for Securing a Disc-On-Module**



Differences

- CPU-1233 has no Disk-On-Chip socket available
- CPU-1232 has No securing place for Disk-On-Module.
- CPU-1232 had a 90 degree connector
- CPU-1232 was only ATA-4 Compliant

CPU-1233 Connectivity

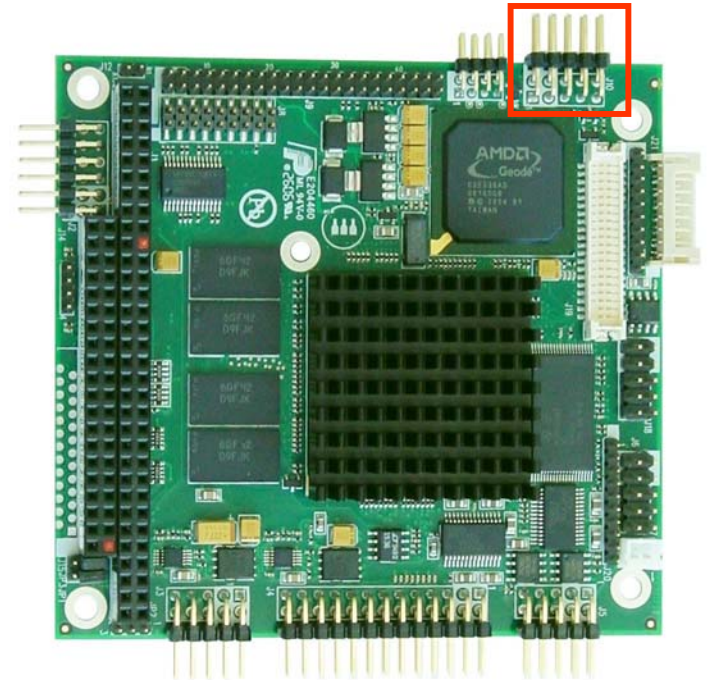
Standard Connectors

Multifunction

- VGA

Connector

- J10
- 5 x 2 pins
- 2.54mm pitch



Differences

No Change

CPU-1233 cannot use VGA and TFT simultaneously

CPU-1233 Connectivity

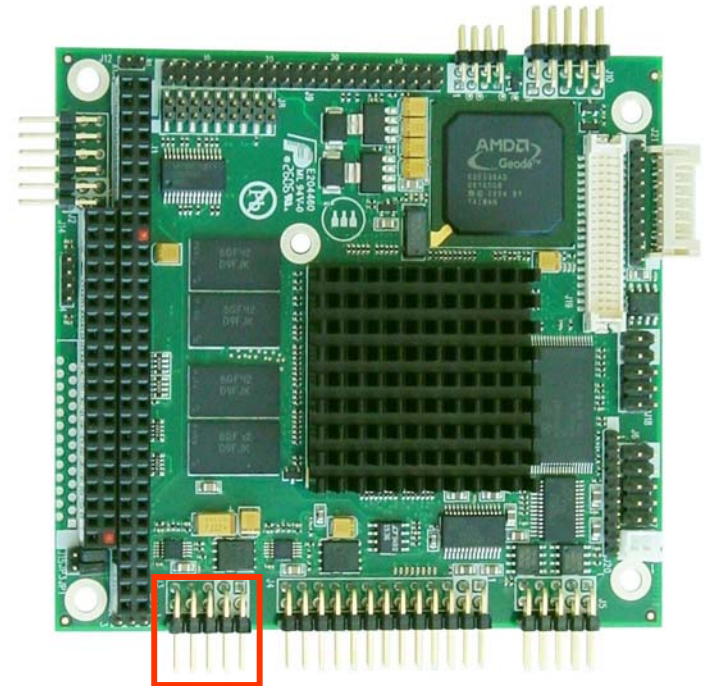
Standard Connectors

Multifunction

- Keyboard
- Battery
- Speaker
- Reset

Connector

- J3
- 5 x 2 pins
- 2.54mm pitch



Differences

CPU-1233 does not have the External Power button connected

CPU-1233 Connectivity

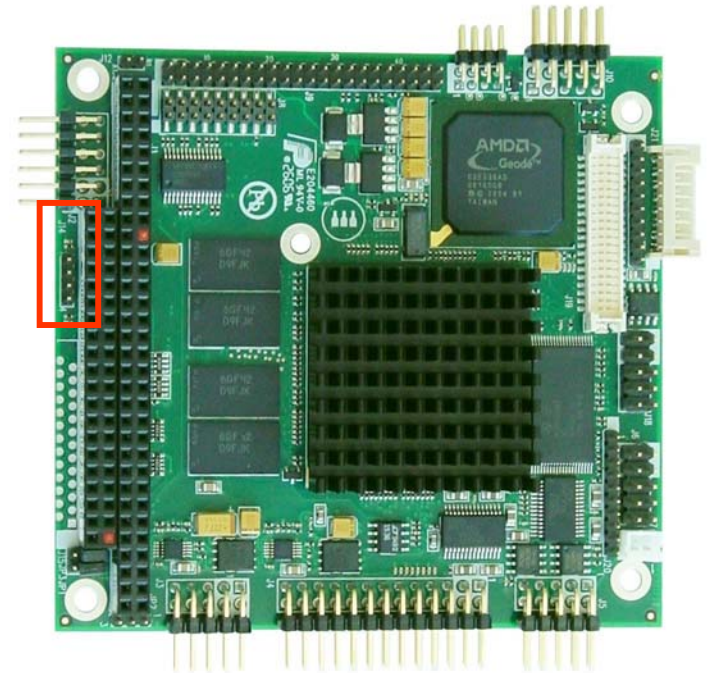
Standard Connectors

Multifunction

- Mouse

Connector

- J14
- 4 x 1 pins
- 2.00mm pitch



Differences
No Change

CPU-1233 Connectivity

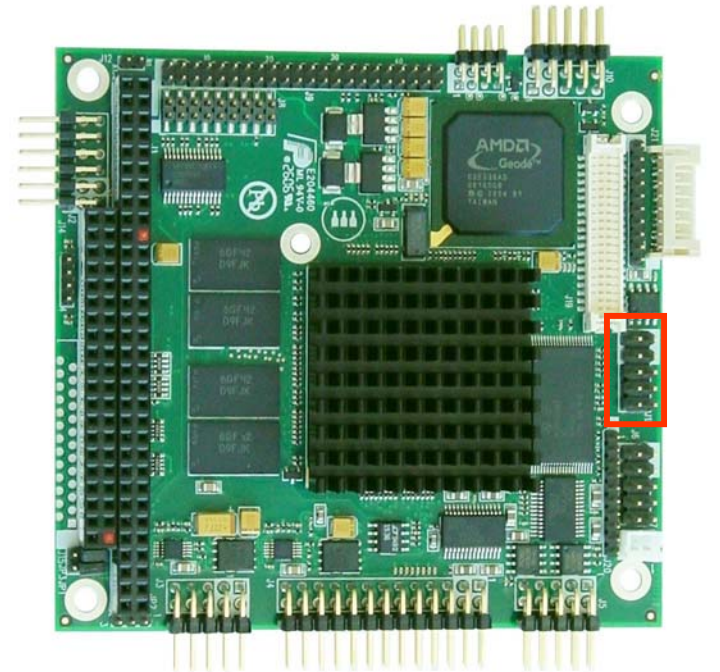
Standard Connectors

Ethernet

- Realtek 8139D chipset
- 10/100Mbps

Connector

- J18
- 5 x 2 Pins
- 2.54mm pitch



Differences

CPU-1232 had Realtek 8139C

CPU-1233 does not have LED2 connected

CPU-1233 Connectivity

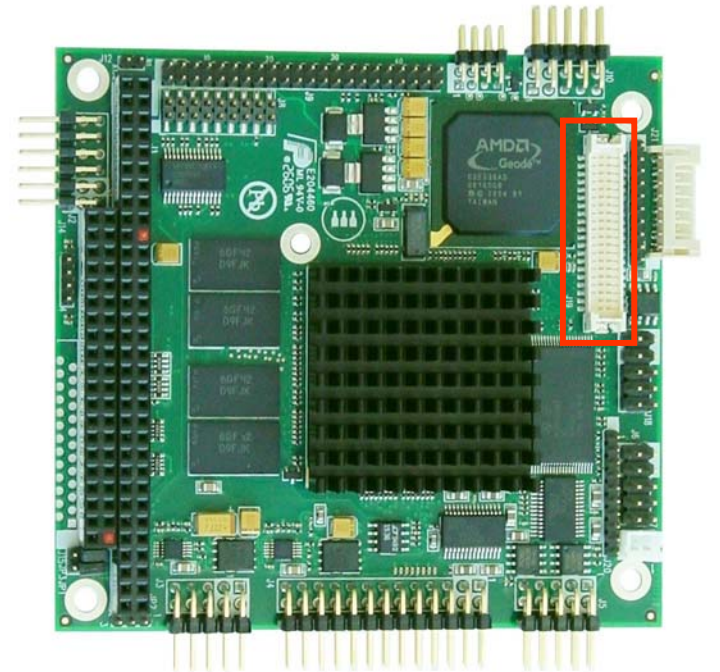
Standard Connectors

LCD /TFT

- LCD
- TFT

Connector

- J19
- 20 x 2 pins
- 1.25mm pitch



Differences

CPU-1233 has “Blue” and “Red” pins inverted
CPU-1233 cannot use VGA and TFT simultaneously

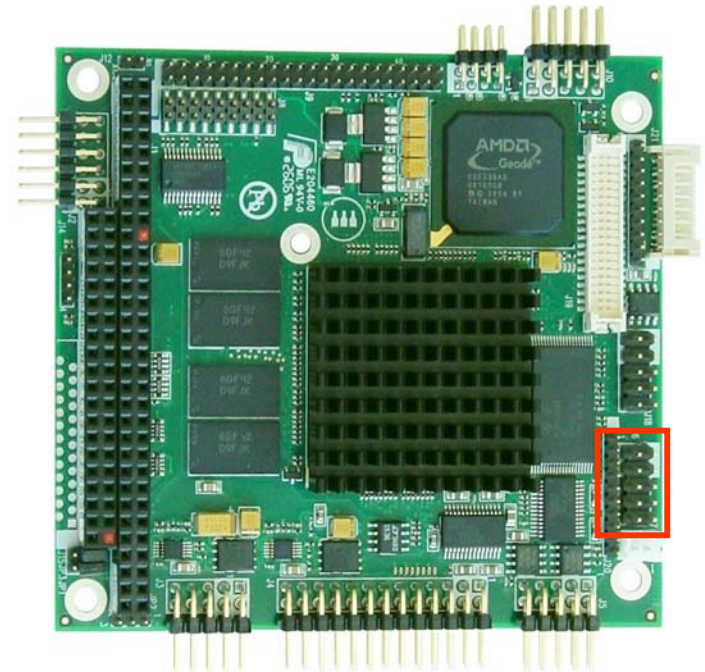
Standard Connectors

Serial

- Serial port 2: RS232 only
- 16550A & 16450 compatible
- UART data rates up to 1.5 Mbaud

Connector

- J6
- 5 x 2 pins
- 2.54mm pitch



Differences

No changes

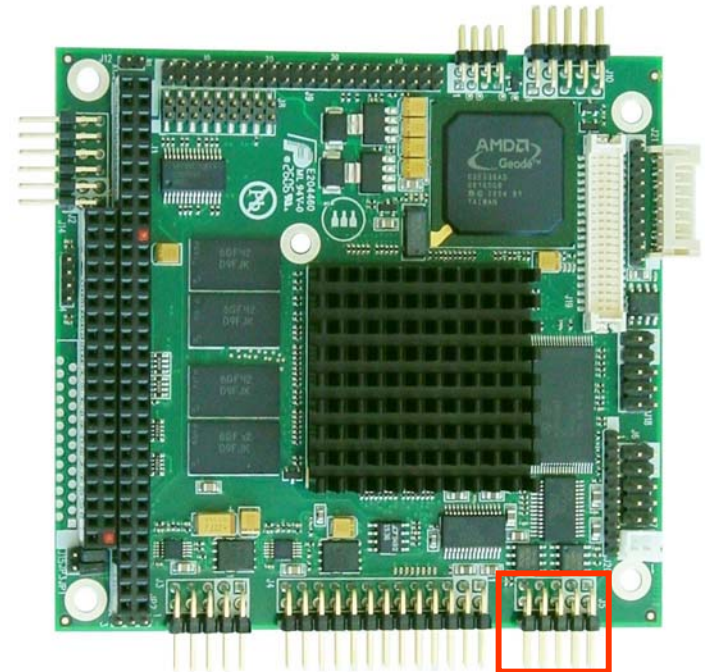
Standard Connectors

Serial

- Serial port 1: RS232, RS422 or RS485
- 16550A & 16450 compatible
- UART data rates up to 1.5 Mbaud

Connector

- J5
- 5 x 2 pins
- 2.54mm pitch



Differences
No changes

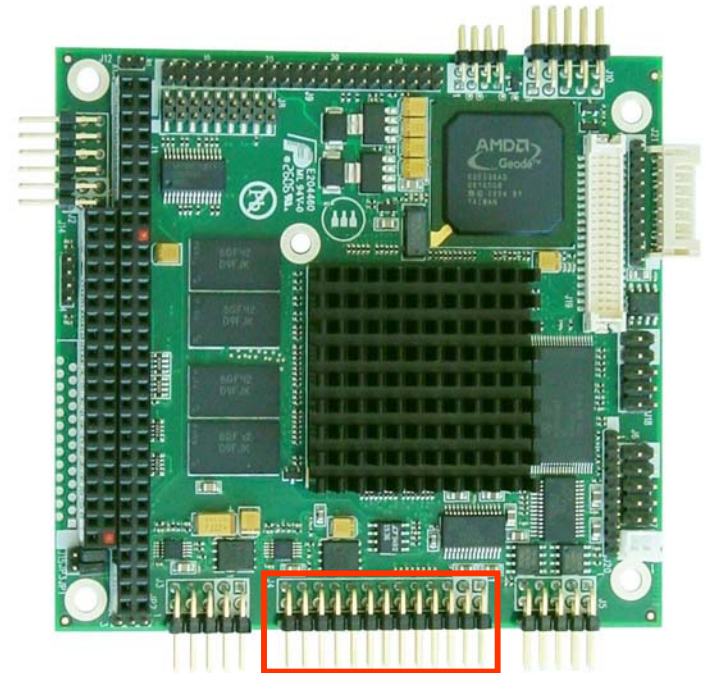
Standard Connectors

Parallel

- Enhanced Parallel Port
- EPP1.9 and IEEE1284 compliant

Connector

- J4
- 13 x 2 pins
- 2.54mm pitch



Differences

CPU-1233 has no floppy disc on Parallel port (Now available on USB).

CPU-1233 Connectivity

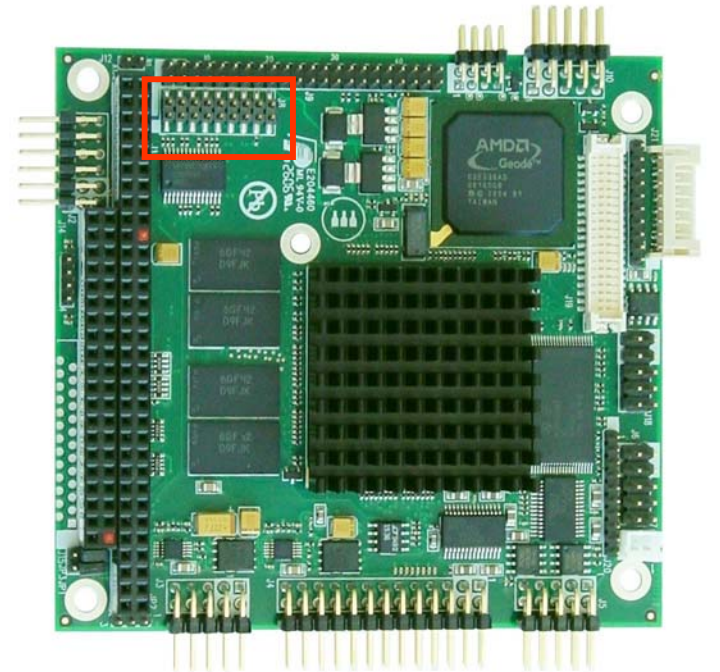
Standard Connectors

AC97

- AC97 Version 2.3 compliant

Connector

- J8
- 9 x 2 pins
- 2.00mm pitch



Differences

CPU-1232 was only version 2.1 compliant
CPU-1233 does not have AC97CLK signal

CPU-1233 Connectivity

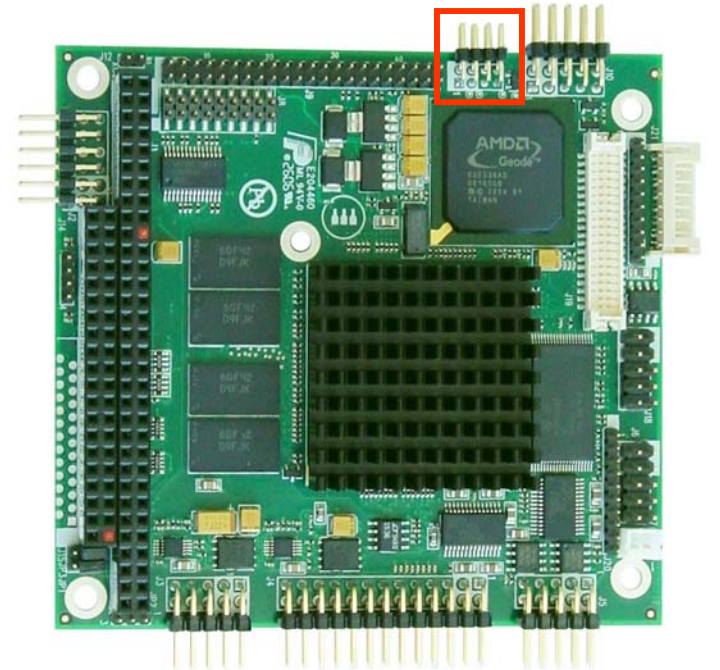
Standard Connectors

USB 0 & 1

- USB 2.0 compliant
- Low, Full or High Speed

Connector

- J7
- 4 x 2 pins
- 2.00mm pitch



Differences

Connector is now 90 degrees
CPU-1232 was only USB1.1

CPU-1233 Connectivity

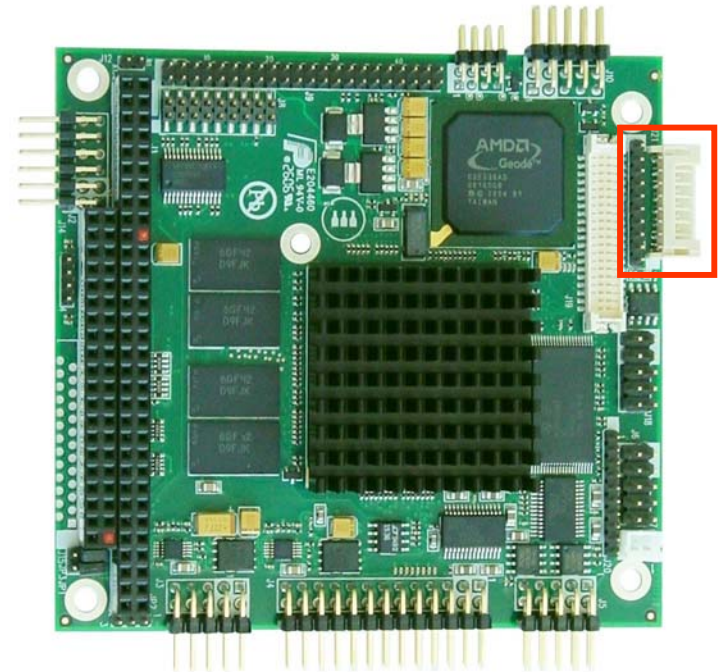
Standard Connectors

USB 2 & 3

- USB 2.0 compliant
- Low, Full or High Speed

Connector

- J21
- 8 x 1 pins
- 2.54mm pitch



Differences

New connector

CPU-1232 was only USB1.1

CPU-1233 Connectivity

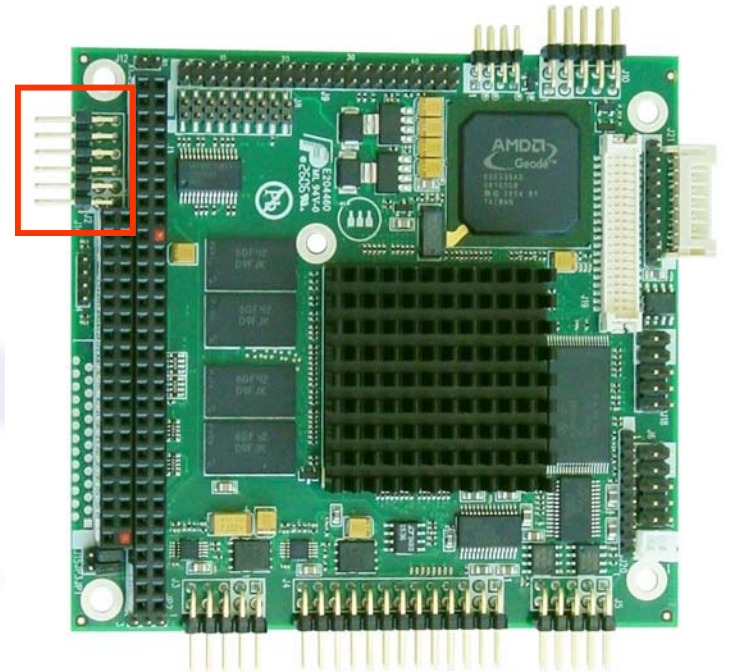
Standard Connectors

External Power

- External power input
- Support for AT or ATX PSU

Connector

- J11
- 6 x 2 pins
- 2.54mm pitch



Differences

No change